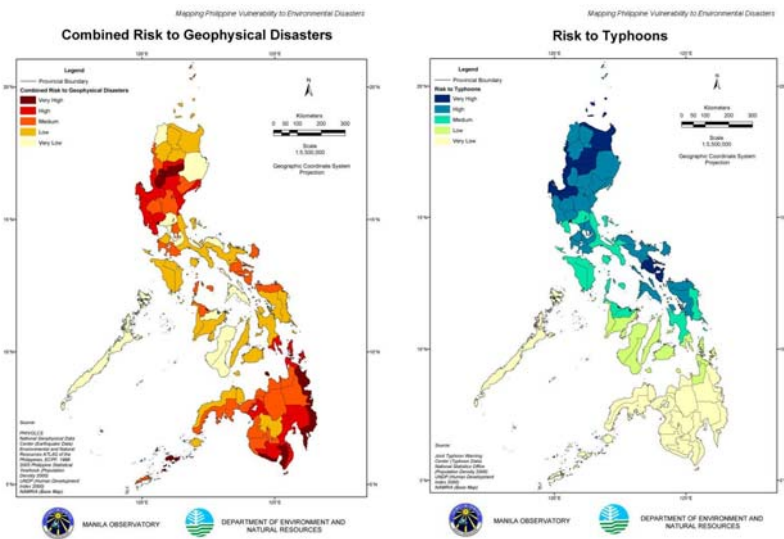


Addressing Social Vulnerability through Land Use Planning in Metro Manila

By Tara Ledesma

Hazards that Metro Manila is exposed to (based on MMEIRS):

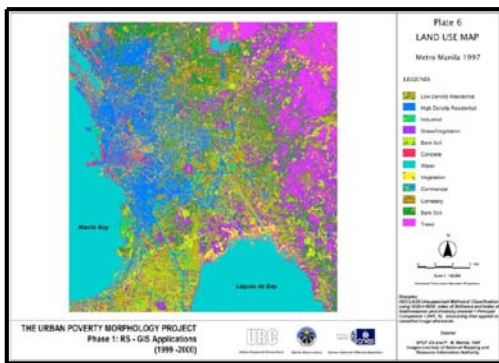


Objectives

1. Identify social vulnerability issues in the context of Land Use Planning processes
2. Establish Land Use Planning mechanisms to address these social vulnerability issues and how they could further be integrated into disaster management planning.



Metro Manila Land Use 1997



Metro Decentralization Plan (based on MMDA PFDP 1996-2016)

