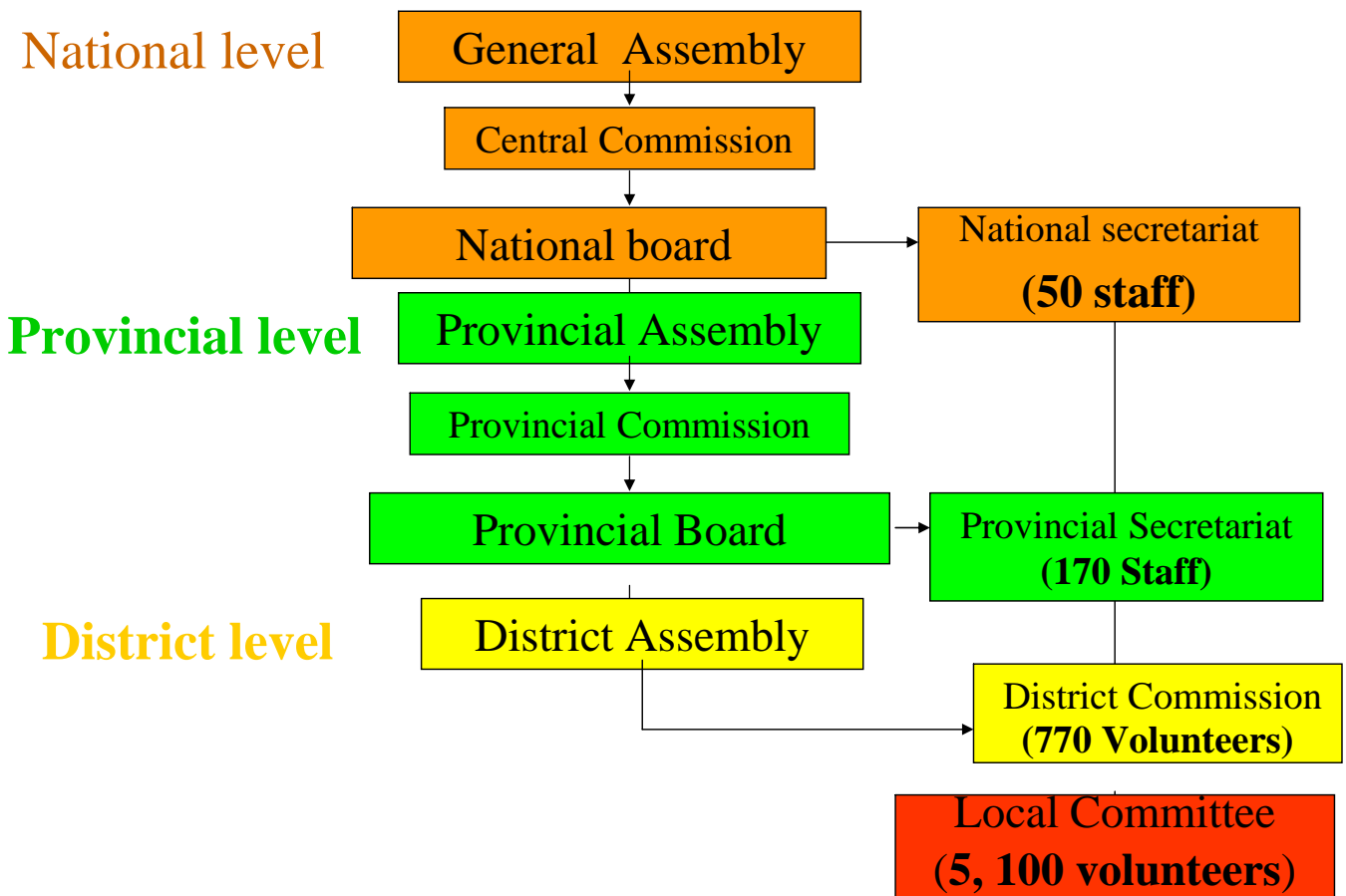




# Community Based Disaster Preparedness

## What role for local organizations ?

### CVM structure



# CVM vision & Strategic objectives



## Vision

“Contribute towards the building of a mozambican society that is increasingly less vulnerable to disasters and epidemics, and free of the poverty.

“To strengthen the capacity of communities in the regions most prone to disasters, so that they may be better informed and prepared to deal with their consequences, thus reducing their impact”.

“To strengthen the readiness of the CVM and of the communities for an effective response when disasters strike”.

## Pilot phase:



### • 2001 in Inhambane:

- Model from the Philippines
- support from the Danish RC

### • 2001 in Zambézia:

- ✓ Model from Latin America
- ✓ Support from IFRC

# Target districts



**Zambézia province**  
Namacurra, Maganja da  
Costa and Mopeia

**Sofala province (2002)**  
District of Búzi

**Inhambane Govuro,**  
Vilankulos & Inharrime

## Project main components

- 1. CBDP  
activities**
- 2. Early  
Warning  
System**



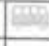




## CBDP project cycle:

- Contact with government institutions & community leaders
- PRA for the identification of project sites
- Target community identification
- Training of volunteers and provincial staff
- Establishment of local disaster committees
- Assignment of responsibilities and training of local disaster committee members
- PRAs for the identification and prioritization of mitigation micro-projects
- Production of community disaster plans
- Implementation of mitigation micro-projects
- Evaluation of the project

## Responsibilities of the Local Disaster Committees

- Radio
- Early Warning
- Evacuation
- Water transport
- Land transport
- Shelter
- Preparedness kit

LISTA DE MEIOS DE TRANSPORTE

						Outro
Trator		X				
Trator			X			
Trator	X					
Trator					X	
Trator	X					
Trator			X			

# Planning with Local Disaster Committees



- ✓ Maps of risk areas
- ✓ Evacuation routes
- ✓ Identify meeting points
- ✓ Simulation exercises
  - water rescue
  - community evacuation schemes

# Activities with Local Disaster Committees



- ✓ EWS: dissemination of messages and distribution of freeplay radios with other partners (Fewsnet Mind)
- ✓ Measurement of water levels using conventional or traditional materials
- ✓ Implementation of mitigation micro – projects:
  - houses in high ground land
  - small bridges
  - dikes

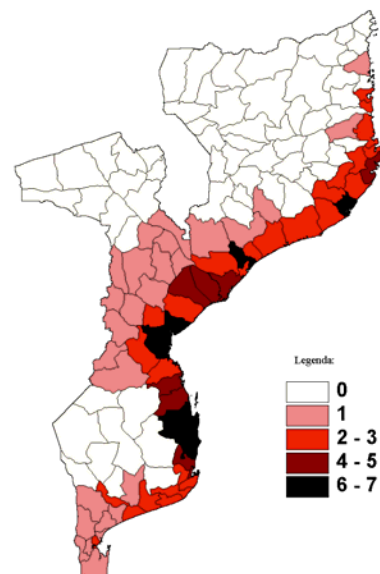
## Measurement of water levels – Búzi



## Early Warning System (EWS)

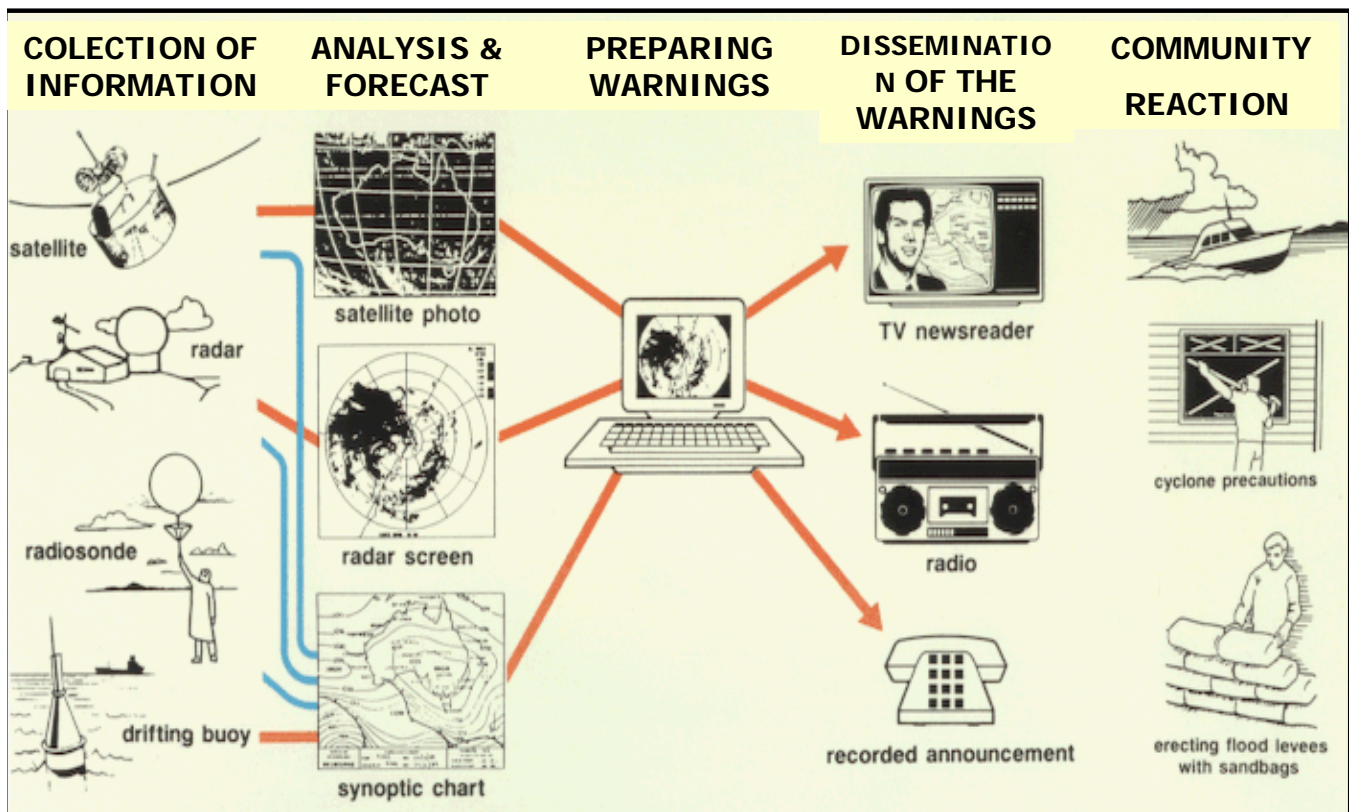
November 2002:

*The government sets up a cyclone warning system to disseminate to the largest possible number of people alert signs and messages, so that they take the necessary precaution measures in case of a cyclone” .*



**Tropical cyclones  
1970-2000**

# WHAT IS TO BE ACHIEVED WITH THE EWS:



## CVM responsibility in the EWS

- Dissemination of EWS distribution of posters by volunteers
- District Commission are alerted by the public radio station and contact the trained volunteers.
- Promote the use of traditional EW methods by the communities



# NOVO SISTEMA DE ALERTA DE CICLONES EM MOÇAMBIQUE

CORES = FASES DE APROXIMAÇÃO DO CICLONE



## ALERTA AZUL

DENTRO DE 24 A 48 HORAS  
VENTOS FORTES E CHUVA PODERÃO  
AFECTAR A ÁREA



## ALERTA AMARELO

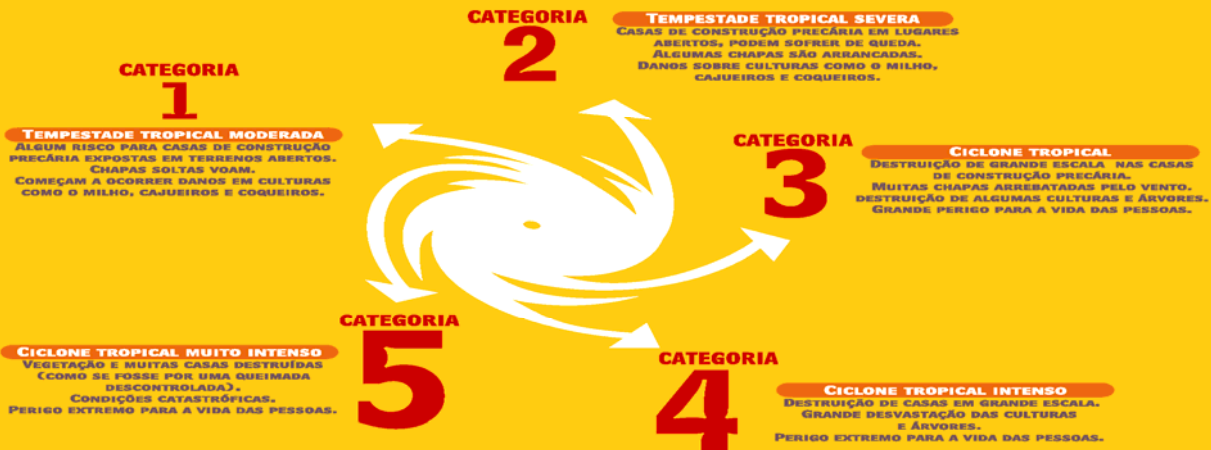
DENTRO DE 24 HORAS  
VENTOS FORTES E CHUVA PODERÃO  
AFECTAR A ÁREA



## ALERTA VERMELHO

DENTRO DE 6 HORAS  
VENTOS FORTES E CHUVA PODERÃO  
AFECTAR A ÁREA, OU JÁ  
A SOPRAR NO MOMENTO DO AVISO

NÚMEROS = INTENSIDADE DO CICLONE



RESULTADO DE TRABALHO CONJUNTO ENTRE O INSTITUTO NACIONAL DE METEOROLOGIA E INSTITUTO NACIONAL DE GESTÃO DE CALAMIDADES COM O APOIO DA USAID | FEWS NET MIND



Challenges, lessons learned  
and main recommendations

## What could be improved - CVM

- Allocate more time for CBDP and community mobilisation when planning CBDP projects
- Attention has to be paid to the capacity of the staff and volunteer network before choosing an area.
- Apply local expertise and knowledge about the features of disasters and its effects combined with know how transferred from experts from other countries.
- Long term relationship for the exchange of experiences with more experienced organizations in other countries.
- Training materials should be translated into local languages

## What went well?

- Involvement government authorities at various levels and of traditional leaders and communities members.
- Strengthening of CVM organizational structures closest to the communities and sensitization of key members of the community and local government structures.
- Avoid raising false expectations by defining clearly the role and make very clear to the communities what the organization can or cannot do.
- Advocacy to enable co-operation with external stakeholders and joint efforts in meeting the needs of the communities.
- Traditional preventive measures used as complementary to conventional methods.

## Main Recommendations

- CBDP should be implemented in the context of poverty & vulnerability reduction strategies and should follow an integrated approach by including health, water and sanitation, HIV/AIDS or other relevant interventions.
- The sustainability of projects after the withdrawal of organizations from a concrete area of intervention is a key issue. A clear exit strategy should be defined in a project document before the project is implemented.
- The long term nature of CBDP activities should be taken into consideration to avoid short term projects that do not guarantee sustainability and do not allow the communities to work on CBDP concepts and adopt them in the long term.
- Funding should also be available for capacity building aspects of a community based organization.

## Main Recommendations

- The role of the CVM structures at district and local levels is very important: by coaching the groups of volunteers and community workers these structures address important aspects of long-term sustainability.
- The training applied to community volunteers and the establishment of community disaster management committees should be long-lasting to ensure some basic effect of the project even after its formal termination by external funding.
- CVM is the main agency promoting the national cyclone EWS due. Advocacy towards mobilizing other organizations to work in this field should be made to guarantee an effective national EWS adjusted to the reality and needs of the communities in Mozambique.
- CVM should lobby the Government to include CBDP in the top of the national priorities as far as disaster management is concerned. Currently the emphasis is in response activities



- **For the benefit of all people who need help to overcome the consequences of natural or man made disasters and for a better world, lets all join ends.**

**Thank you for your attention!**