



AXA Climate

Public-Private Partnerships

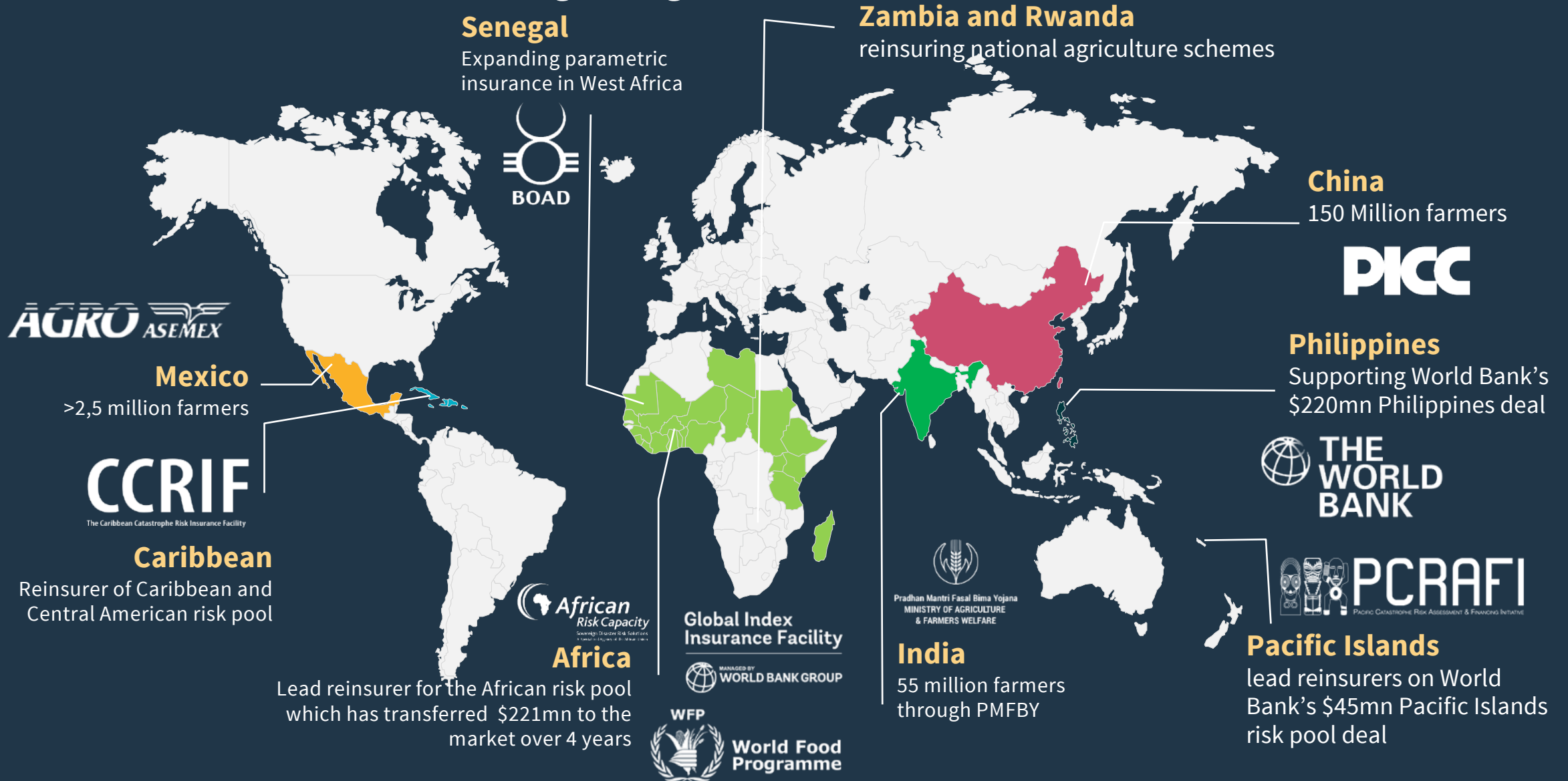
**15th International Conference on Inclusive Insurance
Dhaka, 2019**

Kristian Mangold



Strong focus on Public-Private Partnerships

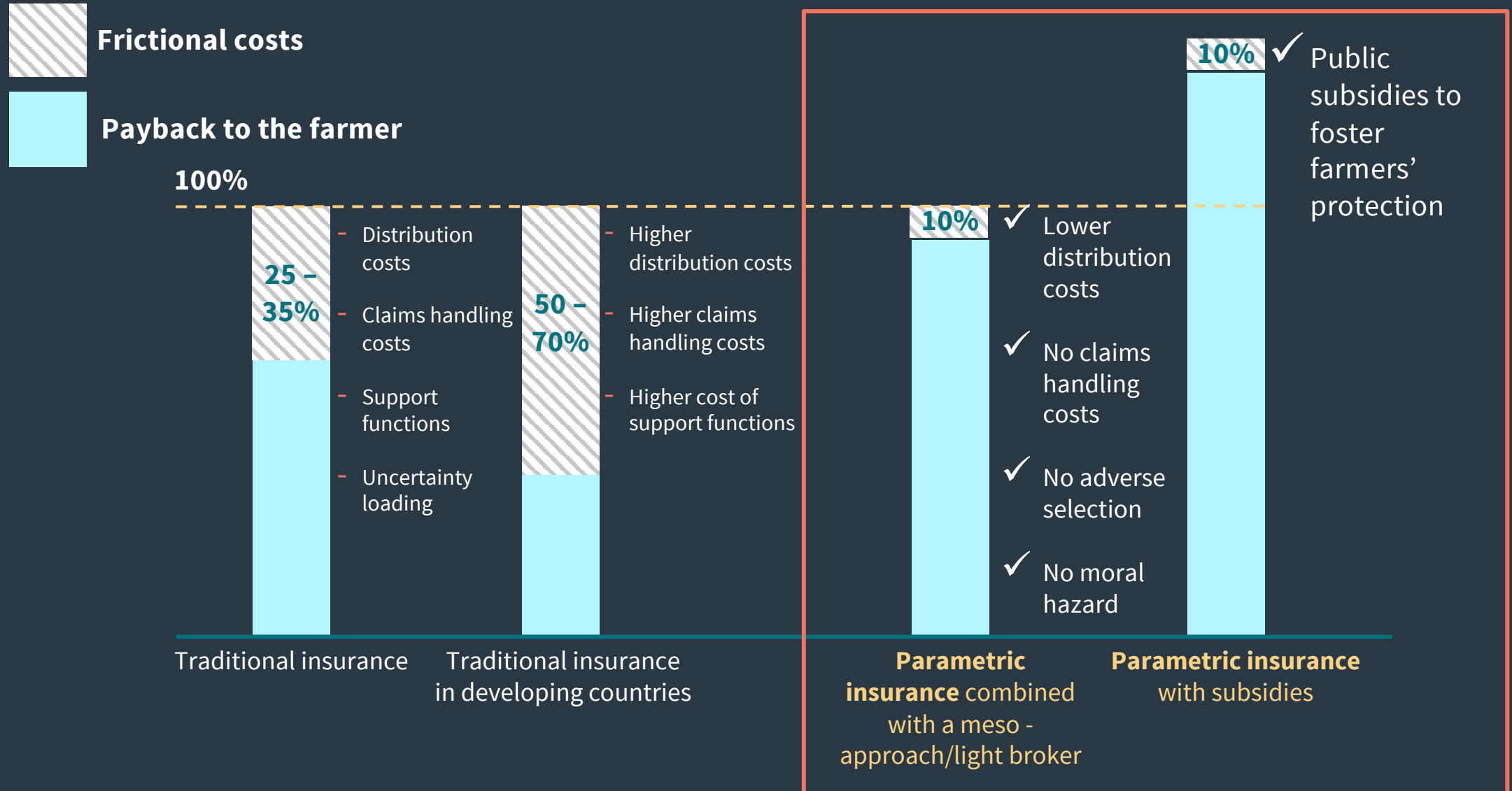
Involvement with the largest Agriculture and Nat Cat schemes in the world





Parametric Insurance's value proposition in agriculture

Parametric insurance offers greater economic value to smallholder farmers





Recommendations going forward

Collaboration from the beginning and new products allow development of insurance markets

Challenges

Reducing information asymmetry, leading to adverse selection, moral hazard and fraud (exclusion of large population groups from the benefits offered by insurance coverage)

Underwriting insurance programs

Reduce price for individuals

Uptake and acceptance of new products

Non-insurance legal provisions, frameworks and policies often form the greatest barrier to insurance development

Recommendations

Parametric (Index-based) insurance based on non-influenceable indices mitigates the problems of information asymmetry

Involve reinsurers from an early stage to structure products which are "underwriteable"

Subsidies allow to introduce insurance to individuals who have no experience with insurance

Link products with bank-loans, especially in agriculture to hedge against climate risks.
Integrate local perception to product design

Holistic approach to insurance, beyond product approval, to broker registration, distribution channels etc.

The background of the slide is a high-quality image of a satellite in orbit above Earth. The satellite is a complex structure with a central body, various antennas, and two long, rectangular solar panel arrays extending outwards. It is positioned in the upper right quadrant of the frame. Below the satellite, the Earth's surface is visible, showing a mix of blue oceans and dark landmasses. A dense network of yellow and orange lights, representing city lights at night, is spread across the landmasses. The horizon of the Earth is visible as a thin, glowing line. In the top left corner, a portion of the Moon is visible against the blackness of space.

Thank you!

Kristian Mangold
Public Sector Business Developer
AXA Climate
Kristian.Mangold@axa.com