

Session 2: Disaster Risk Financing and Agricultural Insurance



Storm, Flood and Climatological Events (1980 – 2021) and Idai Footprint (2019)

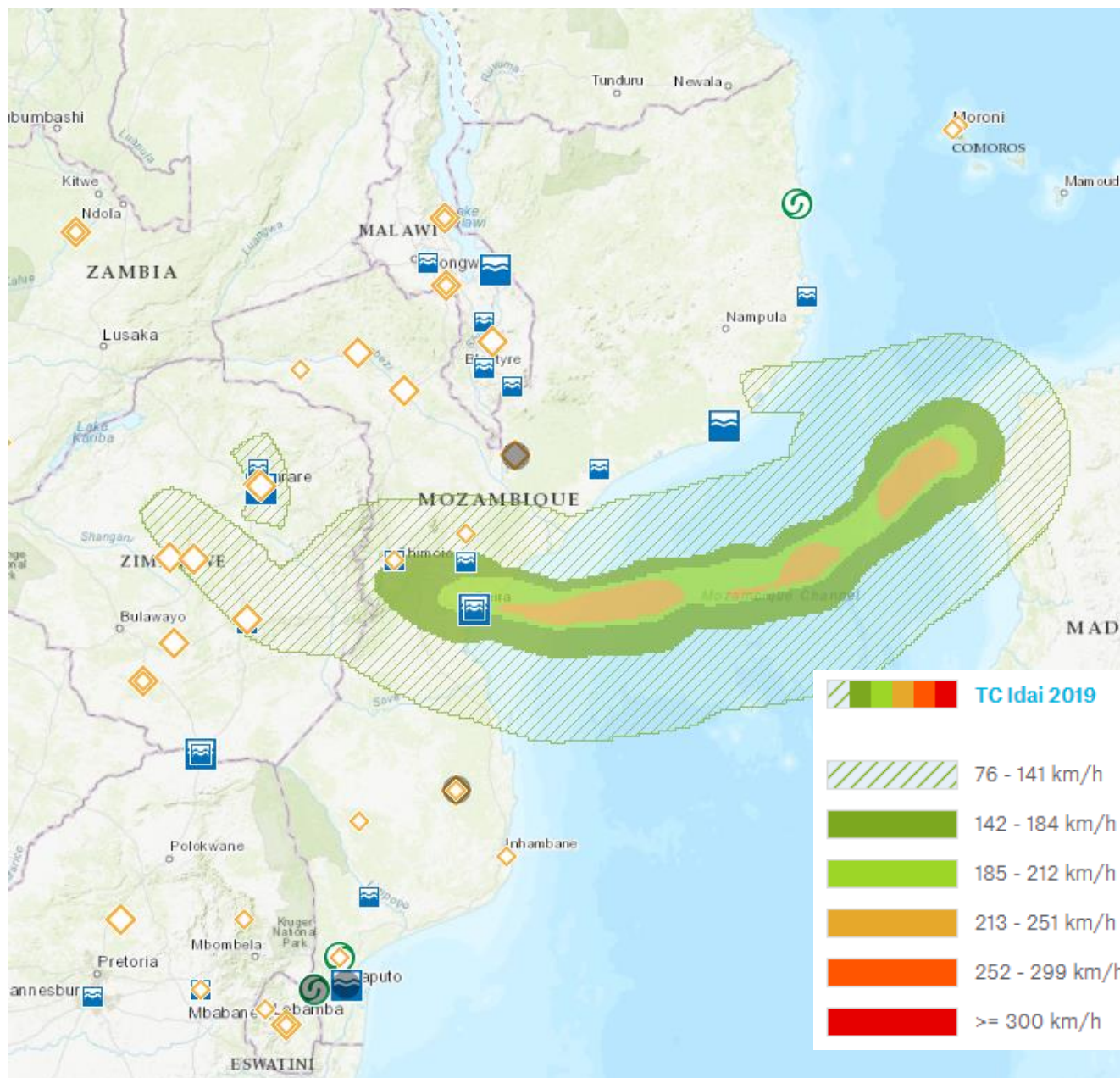
Tropical Cyclone Domoina, flood	
Country	Mozambique
Period	28.1.-4.2.1984
Overall losses	US\$ 170 m
Insured losses	US\$ 29 m
Fatalities	413

Tropical Cyclone Domoina, flood	
Country	Mozambique
Period	28.1.-4.2.1984
Overall losses	US\$ 75 m
Insured losses	-
Fatalities	109

Flood	
Country	Mozambique
Period	February - March 2000
Overall losses	US\$ 320 m
Insured losses	US\$ 20 m
Fatalities	700

Flood	
Country	Mozambique
Period	January - February 2007
Overall losses	US\$ 70 m
Insured losses	-
Fatalities	45

Flood, Tropical Cyclone Fame	
Country	Mozambique
Period	January - February 2008
Overall losses	US\$ 100 m
Insured losses	-
Fatalities	20



Storm Events

Significant storm events

Major storm events

Recent storm events (selection of events that have occurred in the current year)

The event family of storms includes tropical cyclones, winter storms, blizzards/snowstorms, and thunderstorms (including hail and tornadoes).

Flood Events

Significant flood events

Major flood events

Recent flood events (selection of events that have occurred in the current year)

The event family of flood includes floods and landslides.

Climatological Events

Significant climatological events

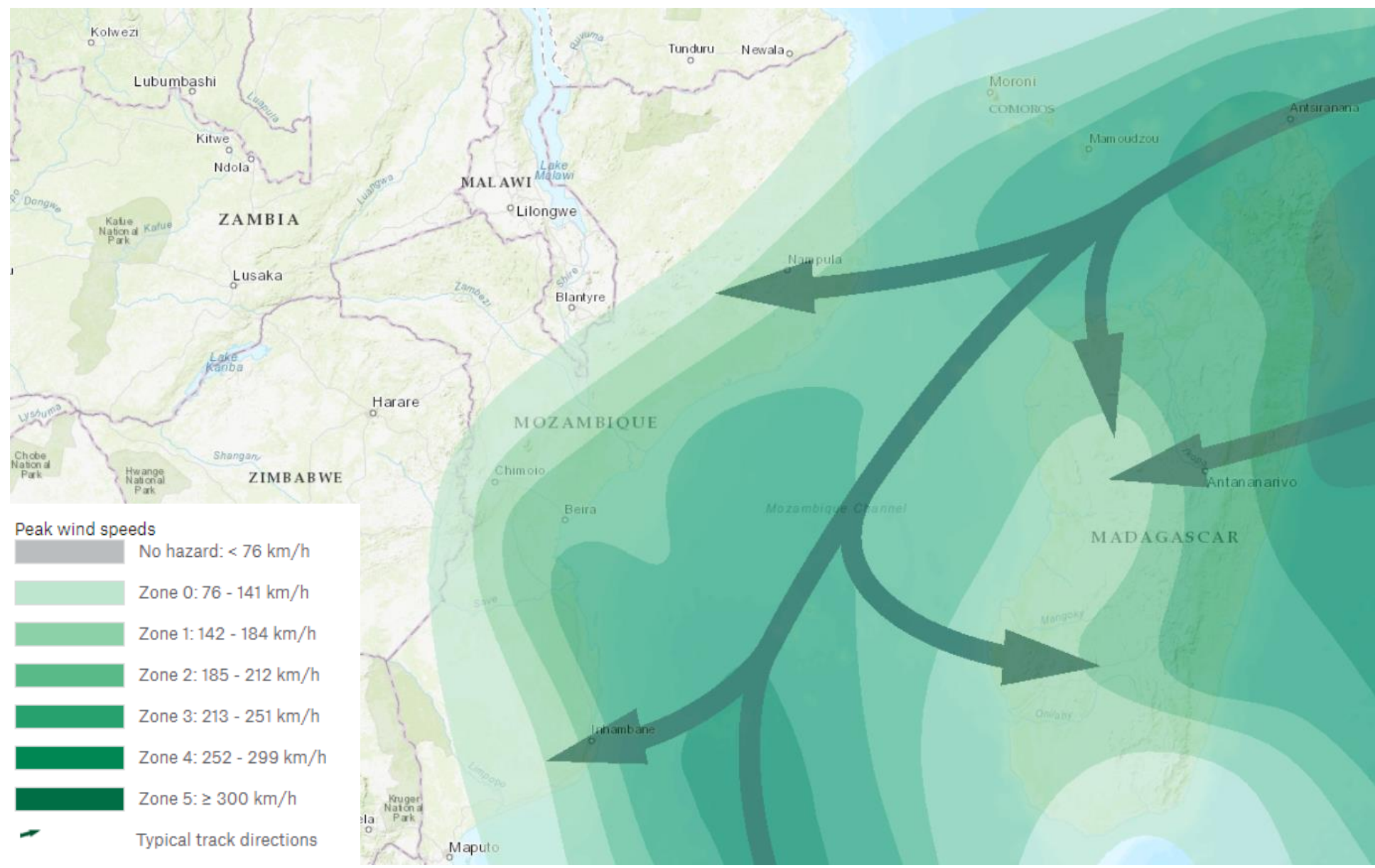
Major climatological events

Recent climatological events (selection of events that have occurred in the current year)

The event family of climatological events comprises extreme temperatures (heat waves, winter damages/cold waves), droughts, and wildfires.

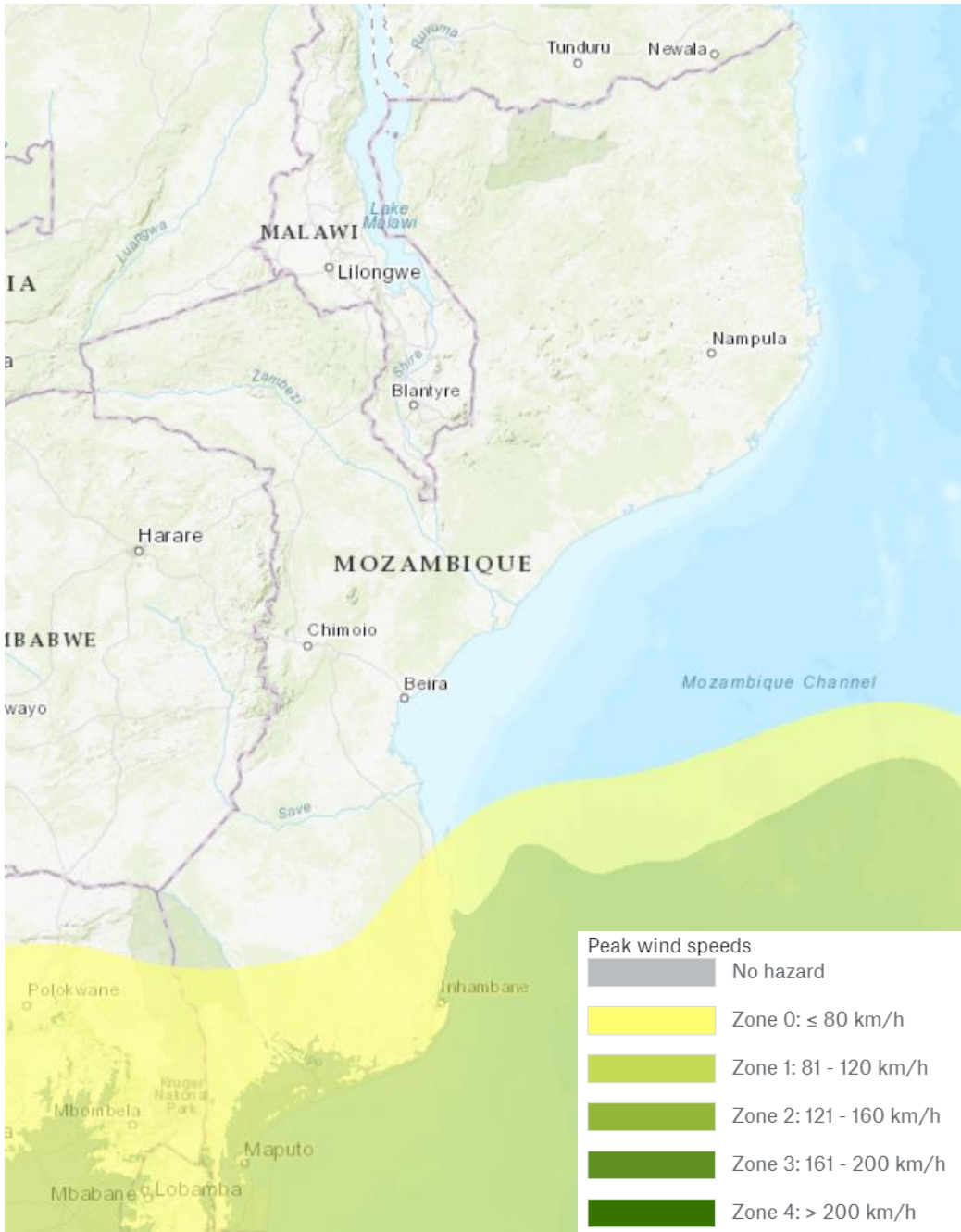
Source: Munich Re, Esri, HERE, Garmin, FAO, NOAA, USGS

Tropical Cyclones



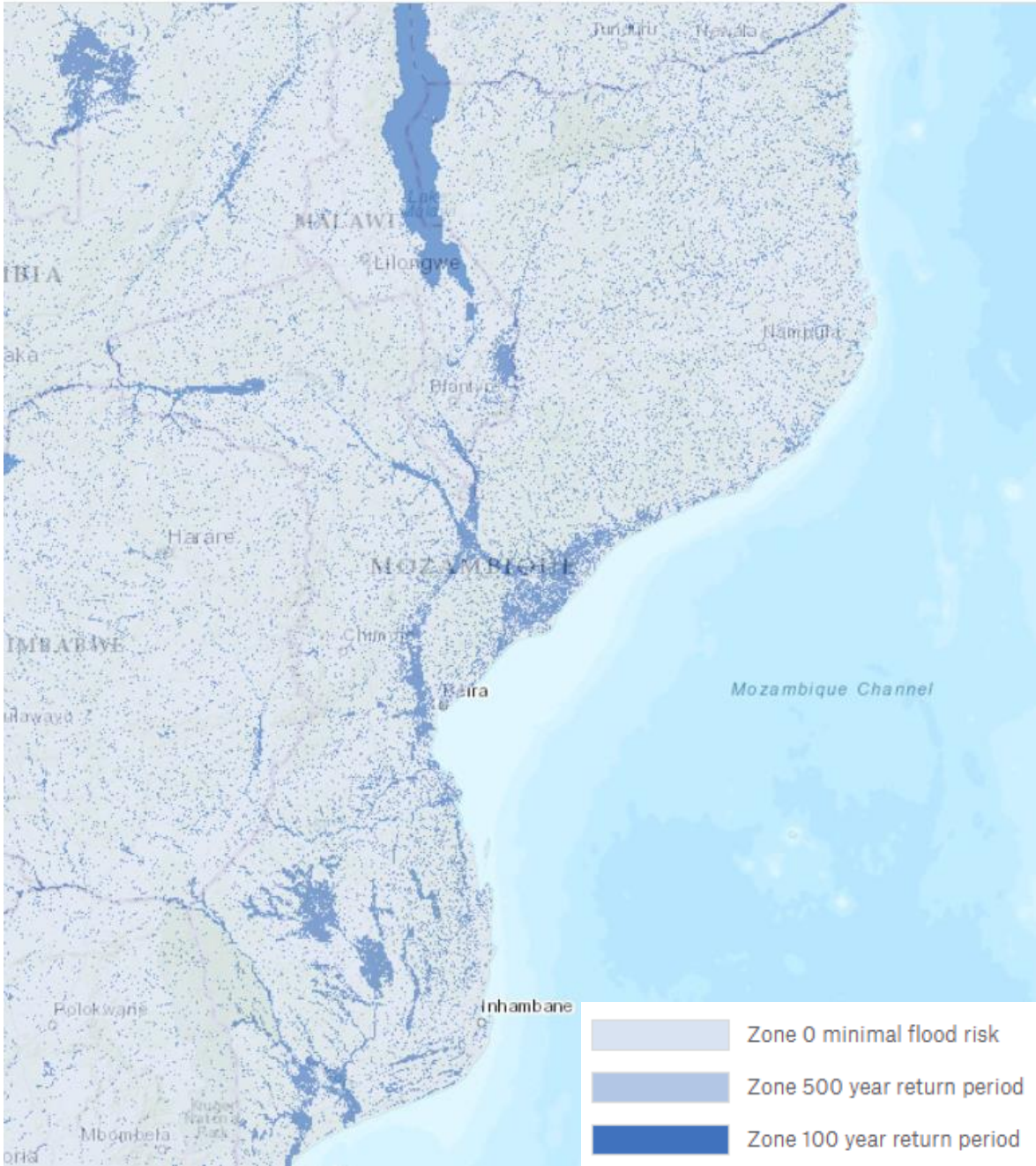
Source: Munich Re, Esri, HERE, Garmin, FAO, NOAA, USGS

Extratropical storm



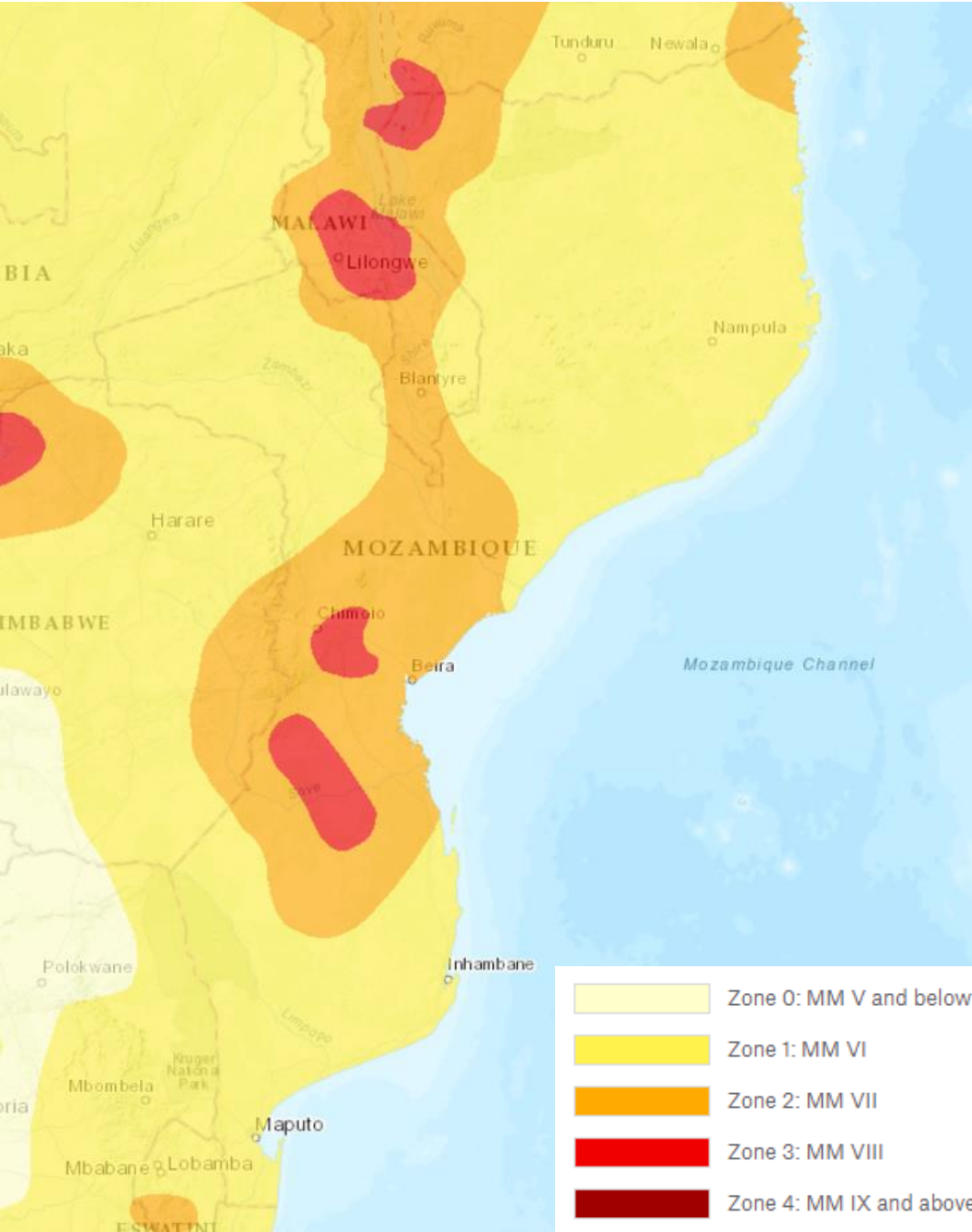
Source: Munich Re, Esri, HERE,
Garmin, FAO, NOAA, USGS

River floods extent



Source: Munich Re, JBA, Esri, HERE, Garmin, FAO, NOAA, USGS

Earthquake



Source: Munich Re, Esri, HERE,
Garmin, FAO, NOAA, USGS

Session 2: Disaster Risk Financing and Agricultural Insurance



Israel Muchena
Hollard Mozambique

Israel Muchena is the Managing Director of Life & Agricultural Insurance at Hollard Moçambique Companhia de Seguros. He holds a Master of Arts Degree in Development Studies from the Nelson Mandela Metropolitan University of South Africa. He also has a Microinsurance Expert Certificate of the Frankfurt School of Finance & Management, Germany. Israel has also worked in insurance and reinsurance in the following markets: Angola, Botswana, Mauritius, Mozambique, Nigeria and South Africa. Among his notable achievements, Israel is a published author of the following two award-winning books:

- Development of Insurance in Angola, 2019 AIO African Insurance Book of the Year.
- Development of Insurance in Mozambique, 2017 AIO African Insurance Book of the Year

Israel will be speaking on Hollard's experience in agricultural insurance for smallholder farmers in Mozambique.



Mauwa Lungu
FSD Zambia

Mauwa is a Certified Financial Inclusion Policy Expert with the Frankfurt University and has a dynamic 12-year career record of hard work and diligence in the financial sector and development world. Mauwa is currently the Director of Financial Services Supply. Her role at FSD Zambia is to provide oversight, coordination and management of the conceptualisation, programming and implementation of all interventions and projects under the Financial Services Supply Unit. She provides oversight to technical thematic areas namely, Informal Finance, Inclusive Insurance, Rural and Agricultural Finance and Inclusive Enterprise Finance. She has a commitment to and a passion for financial inclusion with a particular interest in expanding both formal and informal financial services to rural and remote areas. She holds a Master of Science Degree in Economics and Finance and a Bachelor's degree in Demography and Economics from the University of Zambia.



Ayandev Saha
Inclusive Insurance Expert, Rwanda

Ayandev is working with the Ministry of Finance & Economic Planning, Government of Rwanda as "Strategic Adviser – Financial Sector Development Directorate". In this capacity, he oversees all financial sector (viz. banks, MFI, SACCOs, insurance, pension and capital markets), implementation of policies, strategies and other reforms required to deepen, widen, strengthen the financial sector in order to support real economy sectors to achieve desired economic growth and enhanced well-being of Rwandans. Ayandev has over a decade of design and implementation experience in pension, life, health and agriculture insurance scheme(s) across Afro - Asia region, viz. in India, Afghanistan, Bangladesh, Myanmar, Nepal, Sri Lanka, Ethiopia, Kenya, Namibia, Rwanda, Zambia and Zimbabwe. He has led several World Bank, ADB and donor funded (e.g., USAID, UKAID, IFAD) projects and advised governments, regulators, associations and insurers on social security schemes, regulations and strategies for building mass markets. He has worked extensively in the areas of product development, relationship management and facilitating tie-ups with partners and donors to provide insurance and pension solutions to the low-income households. He holds an MBA in Insurance & Risk Management and Masters in Economics.

Ayandev will be speaking on inclusive agricultural insurance schemes in India.



Pietro Magnoni
World Food Programme, Mozambique

Pietro is currently the Risk Finance specialist at WFP Mozambique, supporting WFPs implementation on microinsurance and disaster risk financing solution. He has been in Mozambique since late 2018, working on behalf of the ILO's Impact Insurance Facility within Mozambique's first micro-insurance company, with the intention of strengthening their distribution channels and product offerings. Previously, he worked across Latin America for a financial inclusion consultancy, being involved, among other projects, in devising index-based coverage for a local MFIs. Pietro is a native Italian speaker, while also being fluent in English, Spanish and Portuguese