

The InsuResilience Global Partnership for Climate and Disaster Risk Finance and Insurance

**Pre-Conference Workshop - Partnerships That Work: Leveraging Public-Private
Collaboration To Reach 500 Million People By 2025**

at the

INTERNATIONAL CONFERENCE ON INCLUSIVE INSURANCE 2022

24 October 2022

Astrid Zwick,

Head of Secretariat, InsuResilience Global Partnership

The InsuResilience Global Partnership In A Nutshell



A joint initiative by the G20+ and V20 bringing together over 120 stakeholders from countries, civil society, international organizations, the private sector and academia

VISION

Protect the lives and livelihoods of poor and vulnerable people through Climate and Disaster Risk Finance and Insurance (CDRFI) solutions.

MISSION

Enabling more timely and reliable post-disaster response and to better prepare for climate and disaster risk by promoting the use of pre-arranged Climate and Disaster Risk Finance and Insurance (CDRFI) solutions.



500

Million vulnerable people protected through CDRFI

80

Vulnerable countries with comprehensive disaster risk finance strategies in place

15%

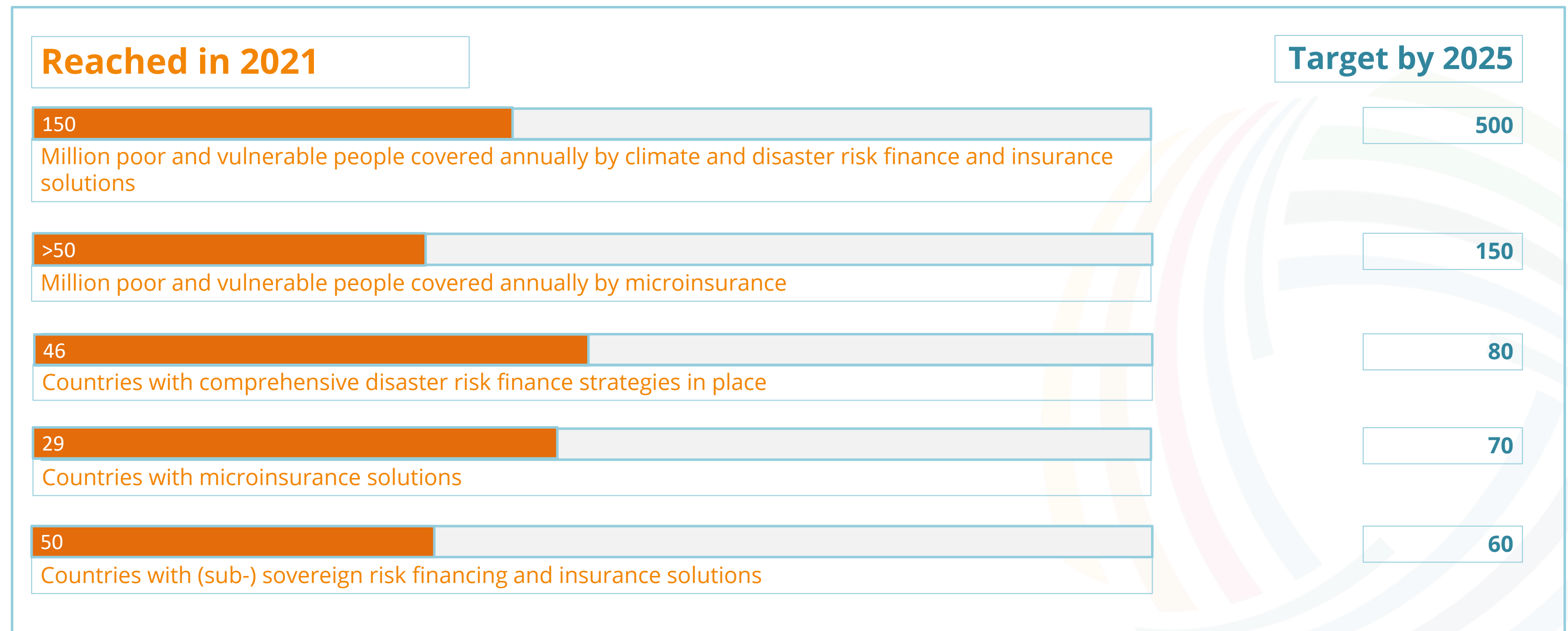
Of annual climate and disaster losses of poor and vulnerable people covered by pre-arranged solutions

\$5bn

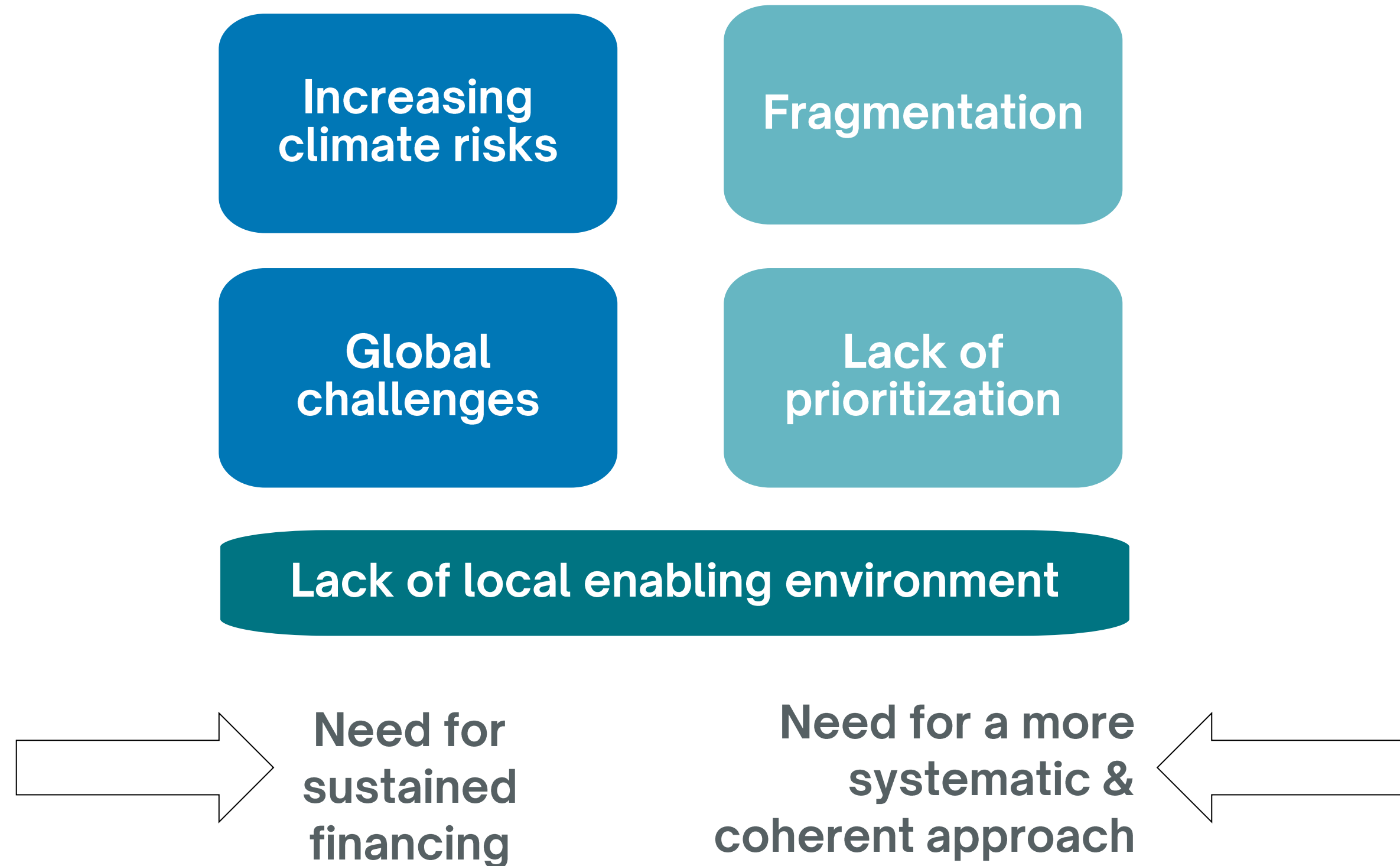
Of risk capacity offered by the private insurance industry

Impact and Achievements towards our Vision 2025

The InsuResilience Global Partnership has a strong bandwidth of solutions all around the globe. **24 implementing programmes were active with over 300 projects in more than 100 countries worldwide in 2021. Thanks to their collective efforts, 150 million people were financially protected through CDRFI solutions.**



Why we need to improve the global CDRFI Architecture



The Global Shield

Help close the protection gap for poor and vulnerable people by providing and facilitating more and better pre-arranged finance against climate and disaster related risks.

G7 countries have agreed to set up a Global Shield against Climate Risks, proposed as an international coordination mechanism supported by a new financing structure

It will work with new and existing financing partners and institutions to systematically analyse countries' protection gaps and design, fund, and facilitate needs-based *CDRFI*

Funding for disaster response and reconstruction is still mainly arranged ex-post, increasing cost of disasters and impacts on lives and livelihoods

Main elements of the Global Shield

