



சனாச லைஃப் இன்ஷூரன்ஸ்
SANASA LIFE INSURANCE

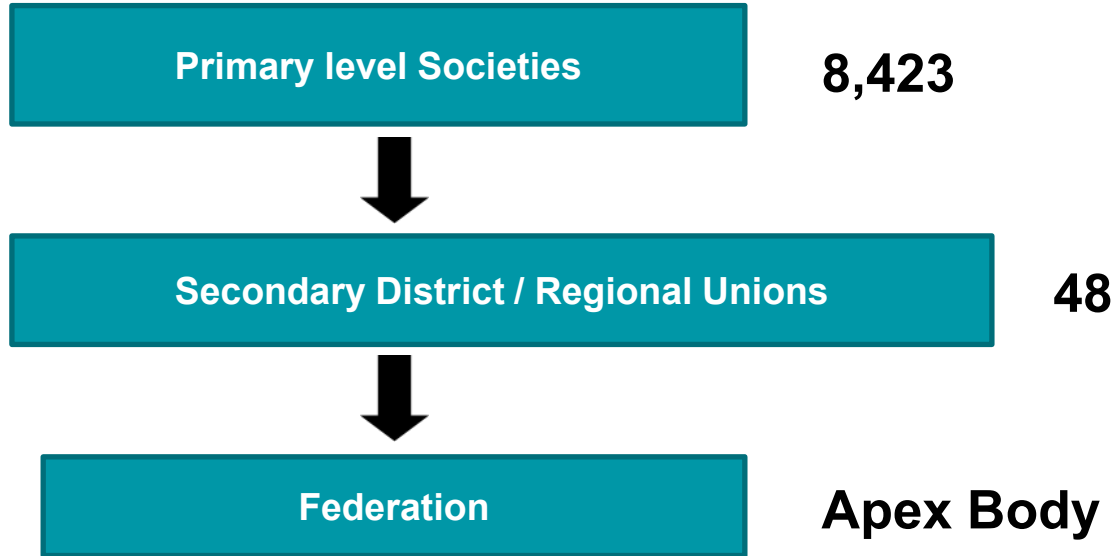
SANASA Life Insurance Company PLC (SLIC)

Under the

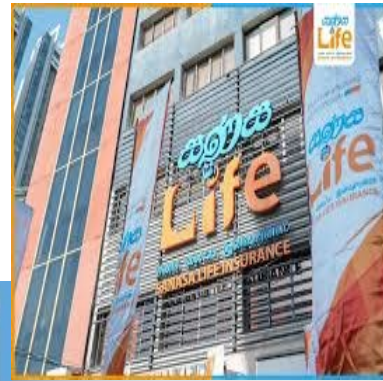
UNDP ICMIF Insurance Innovation Challenge (ICC)

Yasaranga Godawela
Deputy General Manager – Community Sales
Sanasa Life Insurance Company PLC – Sri Lanka

STRUCTURE OF SANASA



SANASA LIFE INSURANCE COMPANY PLC



SANASA Life Insurance Co. PLC
Tel : 011 200 2021 | Fax : 011 257 4705
Web : www.sicl.lk | Email : info@sicl.lk



Values of Sanasa Life Insurance Company PLC

- Speed
- Loyalty
- Integrity
- Care



SANASA Vision: To become a leading assurance company with a large customer base, pioneering in Micro Assurance globally.

SANASA Mission: To provide excellent service, mitigate risks, improve living conditions, and foster economic development for our clients. We aim to create a developed platform for shareholders and staff, contributing to society's development.



Introduction of the National Development Program “SANASA WAYFORWARD”

"SANASA WAYFORWARD" national development program. This program is part of a broader effort to achieve the vision of SANASA, which involves the development and support of cooperative societies in Sri Lanka.

The "SANASA WAYFORWARD" program aims to develop 5,000 villages by focusing on 1,250 selected SANASA Societies out of more than 8,400 societies that are spread across the country.

The goal is to strengthen these societies, enabling them to drive development in their respective villages, thereby contributing to the national development agenda.

In essence, this program is one of the successful projects under the SANASA vision, dedicated to uplifting rural communities and ensuring sustainable development through the cooperative model.

SANASA Life Insurance Co. PLC
Tel : 011 200 2021 | Fax : 011 257 4705
Web : www.sicl.lk | Email : info@sicl.lk



The goals of the National Development Program of SANASA WAYFORWARD

01

Societies
1,250

02

Villages
5,000

03

New Projects
10,000

04

Job Creations
50,000

05

**Beneficiary
Families**
200,000

Impact on Sustainable Development Goals:

- **SDG 5 (Gender Equality):** Empowers women entrepreneurs through tailored financial products and literacy programs.
- **SDG 8 (Decent Work and Economic Growth):** Supports economic stability and growth for MSMEs through risk management and financial education.
- **SDG 10 (Reduced Inequalities):** Reduces economic disparities by targeting underserved communities for financial inclusion and support..
- **SDG 9 (Industry, Innovation, and Infrastructure):**

Improves access to finance, market, and technology for rural and semi- urban MSMEs.

Enhances insurance distribution and accessibility through digital platforms, contributing to resilient infrastructure and innovation.



THANK YOU !

SANASA Life Insurance Co. PLC
Tel : 011 200 2021 | Fax : 011 257 4705
Web : www.sicl.lk | Email : info@sicl.lk

