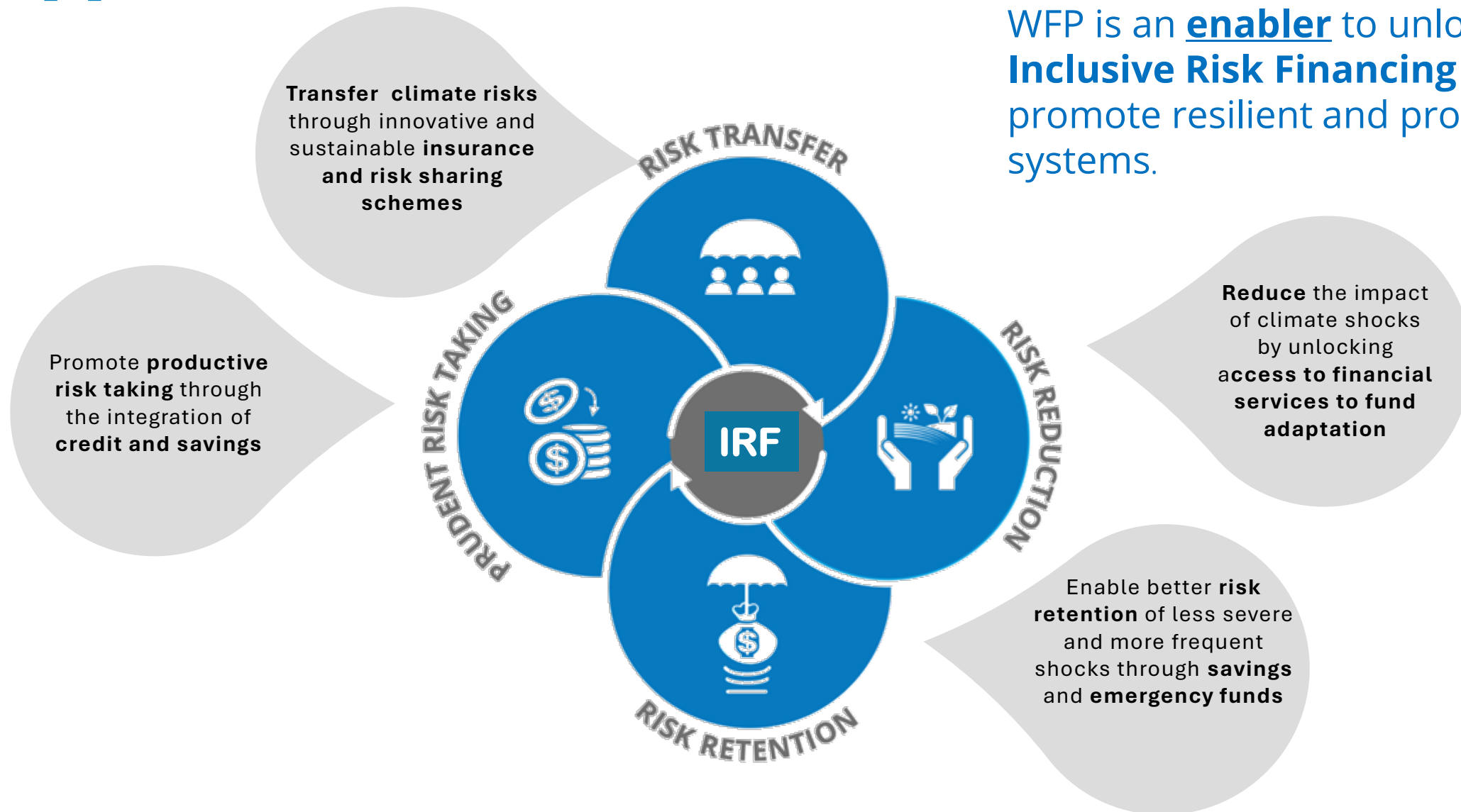


The holistic climate risk management approach of IRF

WFP is an **enabler** to unlock access to **Inclusive Risk Financing** instruments to promote resilient and productive food systems.



Long term soakage zones through green water/deep hydration



Water harvesting swale - farms with arms



Filling beds with "Spongy" material to retain water and fertility



Food Forest Establishment after the Training + Community Scaling up Land Design



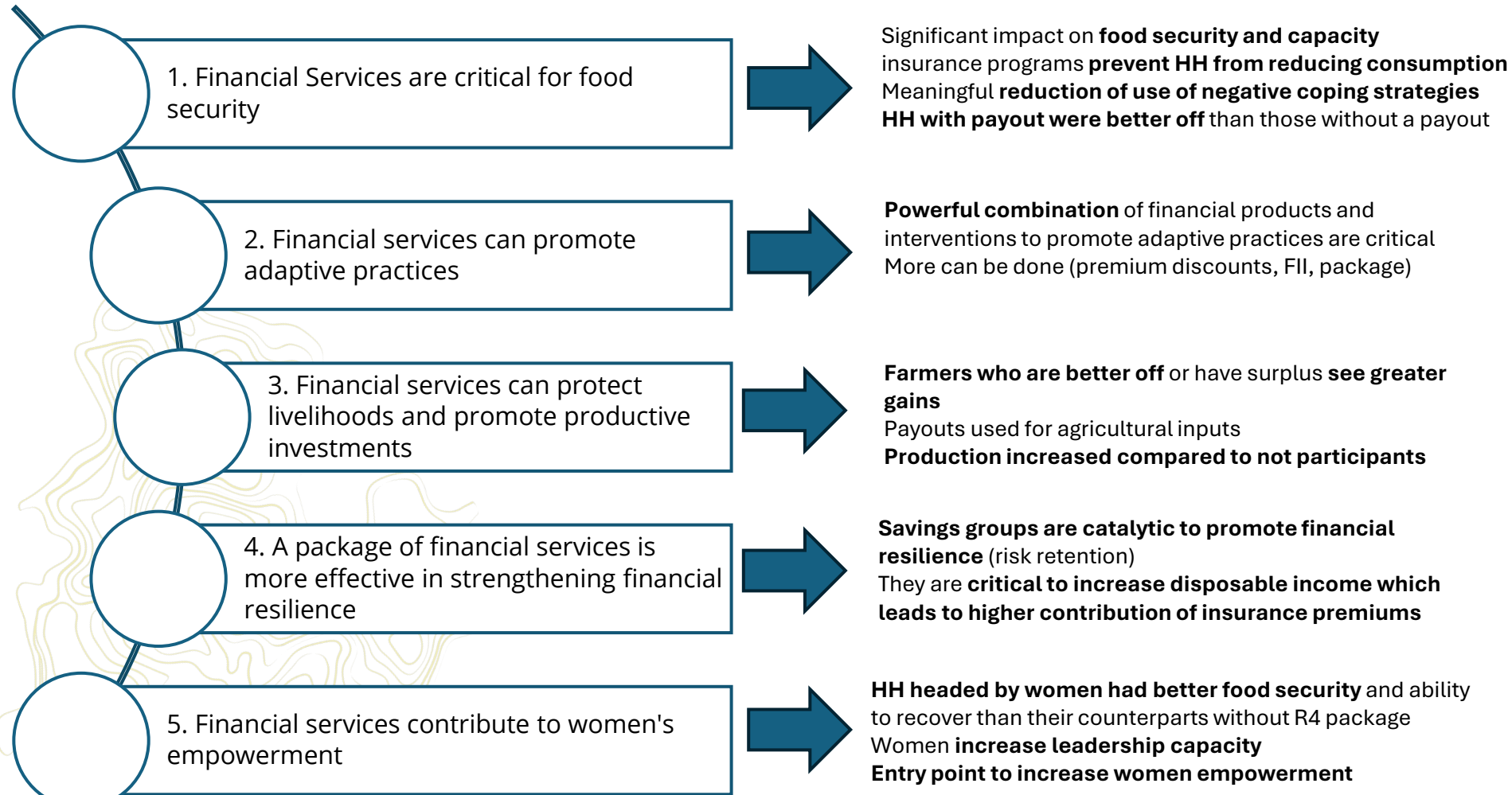








Does this work? Yes!



Enhancing financial protection: The five impact pathways of Inclusive Risk Financing

Evidence from WFP-supported inclusive risk financing programmes
advancing financial inclusion and strengthening resilience



IRF portfolio 2024



21 countries across Africa, Asia and the Pacific, Middle East, Latin America and the Caribbean



3.1 million people covered

Out of the 3.1. million, 2 million were direct beneficiaries receiving premium support



50% women of the direct beneficiaries receiving premium support

\$ 250 million

in **financial protection** from WFP-supported insurance schemes supported by IRF

\$ 41.5 million

In payouts distributed in **2024**, benefitting **1.5 million** people

\$ 17 million

Saved by participants of financial inclusion programmes (VSLAs)

\$ 10.2 million

Of loans accessed by participants