

Presenter: Ms. Valentina Barca, SPACE Programme

Webinar date: 15 September, 2020

Webinar name - Adaptive Social Protection Building resilience against disaster and climate change in a rapidly changing world

Digital events supported by the “World Risk and Adaptation Futures – Summer Academy” programme

**SPACE Social Protection Approaches to COVID-19: Expert advice helpline**

*a supportive space to plan, challenge, and innovate your COVID-19 response through collaboration with leading global experts*



# SPACE Social Protection Approaches to COVID-19: Expert advice helpline

*a supportive space to plan, challenge, and innovate your COVID-19 response through collaboration with leading global experts*

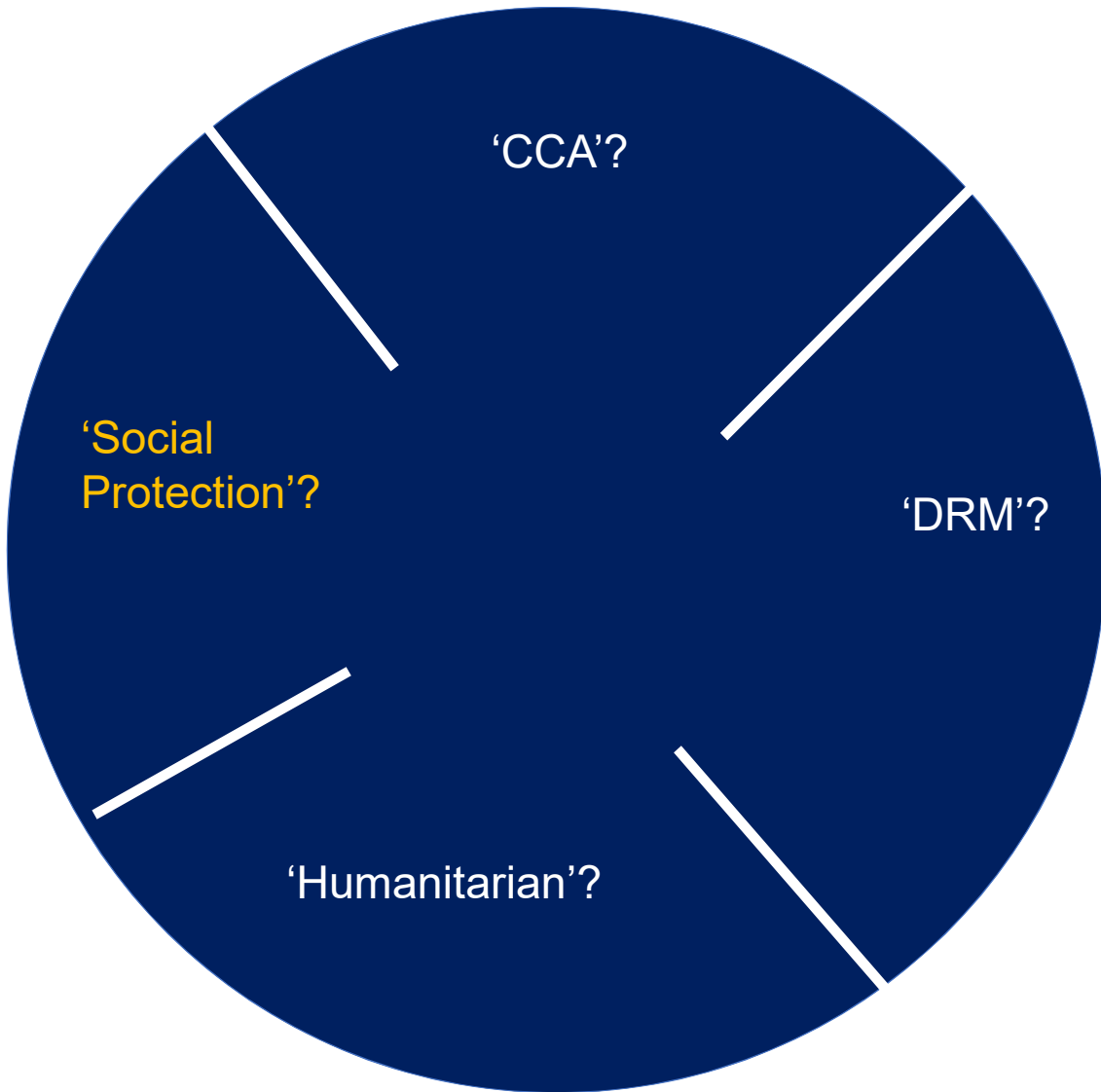
## From reactive to proactive social protection

Valentina Barca 14/09/2020

Building on [TRANSFORM \(2020\)](#) and [SPACE work](#)

[https://twitter.com/ValentinaBarca\\_](https://twitter.com/ValentinaBarca_)





University/study

Repositories/websites/  
journals!

Acronyms and in-language

Twitter!

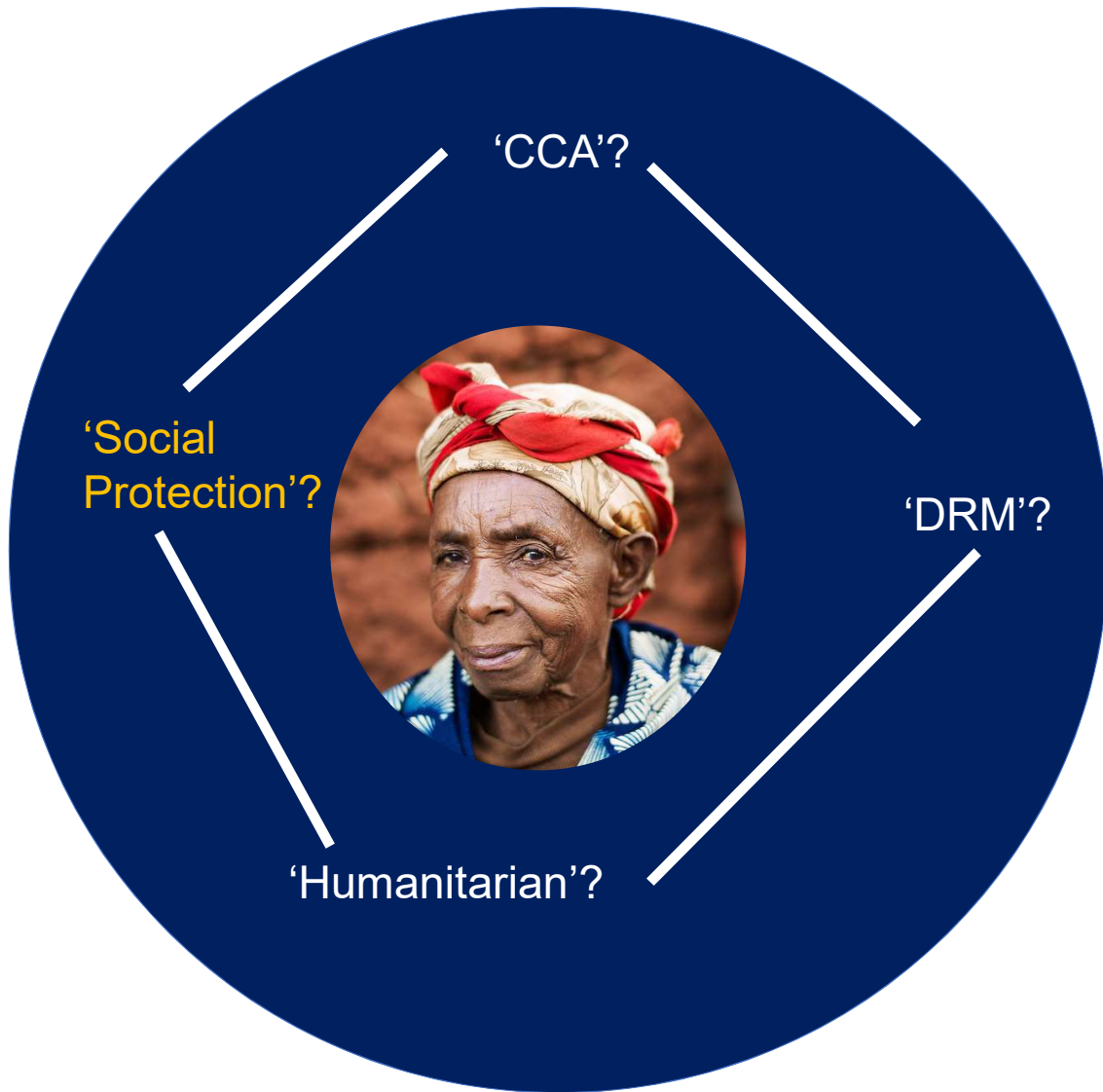
Etc...

## SPACE Social Protection Approaches to COVID-19: Expert advice helpline

*a supportive space to plan, challenge, and innovate your COVID-19 response through collaboration with leading global experts*



giz



**WHAT:** E.g. Social protection's core mandate is to address poverty and vulnerability, no matter how these are generated.

**HOW:** E.g. our toolbox is often overlapping, or at least complementary..

**SPACE Social Protection Approaches to COVID-19: Expert advice helpline**

*a supportive space to plan, challenge, and innovate your COVID-19 response through collaboration with leading global experts*



# Shocks: our new normal

- The number, severity and *duration* of recent humanitarian crises has been on the rise over the past 30 years.
- Shocks, crises, stressors have come to play a large and increasing role in determining the life outcomes faced by individuals and their families – & the **poor and the most vulnerable are most affected.**
- ‘Many’ are broadly predictable, recurrent, protracted – and overlapping..

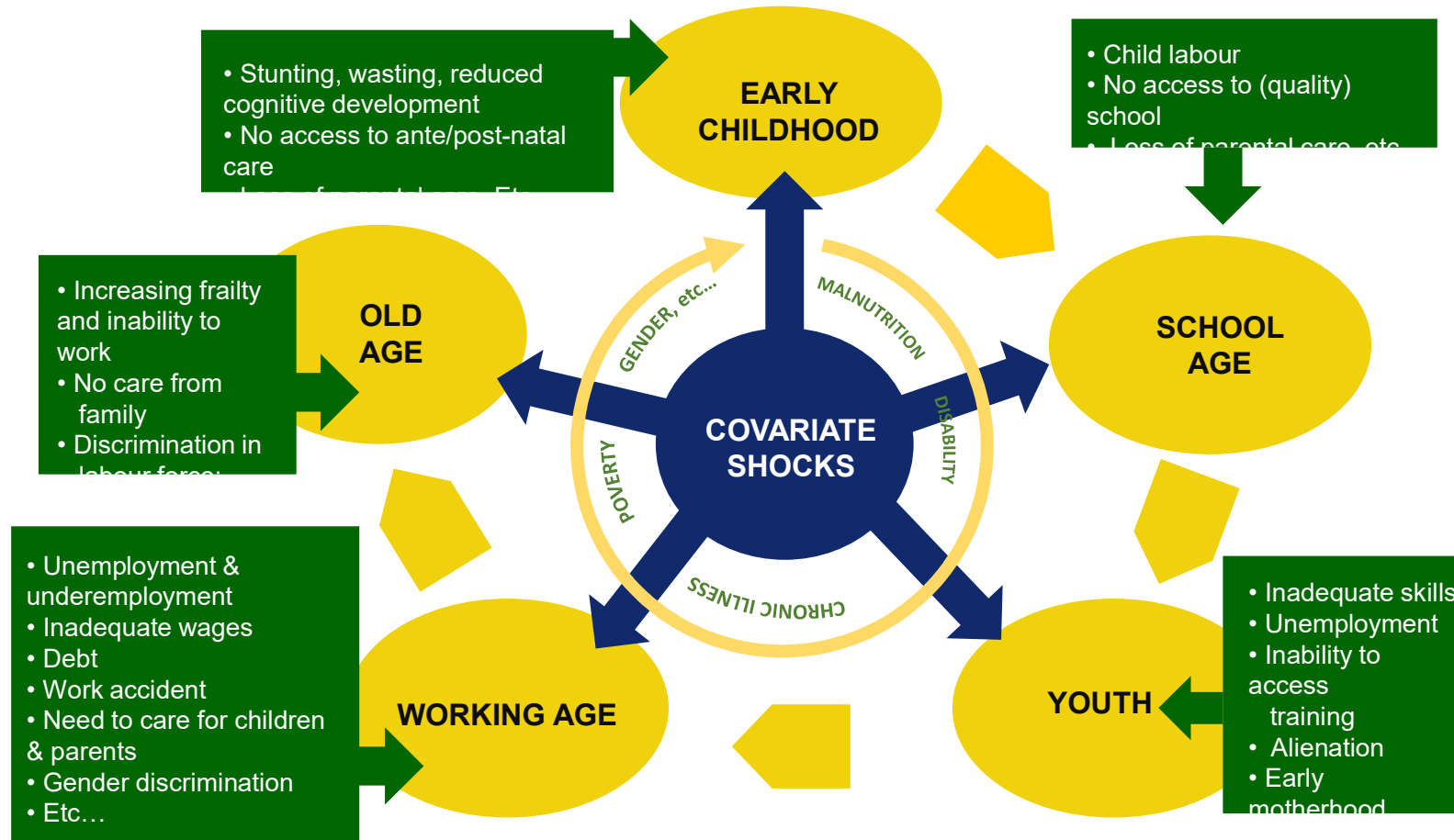


**SPACE Social Protection Approaches to COVID-19: Expert advice helpline**

*a supportive space to plan, challenge, and innovate your COVID-19 response through collaboration with leading global experts*



# Risks along the lifecycle are compounded by covariate shocks



**SPACE Social Protection Approaches to COVID-19: Expert advice helpline**

*a supportive space to plan, challenge, and innovate your COVID-19 response through collaboration with leading global experts*



## So? What do we need to be doing?

Strengthening social protection systems to better support individuals and households in need. Two (overlapping) reasons:

- 1) Cyclical/recurrent/predictable events which are being treated as shocks but are not actually 'shocks' should be under SP core mandate (*high frequency/low severity*)
- 2) If designed/prepared to do so, SP can help achieve improved outcomes and better meet needs of vulnerable/affected populations, *alongside* other sectors (*low frequency/high severity*)

**SPACE Social Protection Approaches to COVID-19: Expert advice helpline**

*a supportive space to plan, challenge, and innovate your COVID-19 response through collaboration with leading global experts*

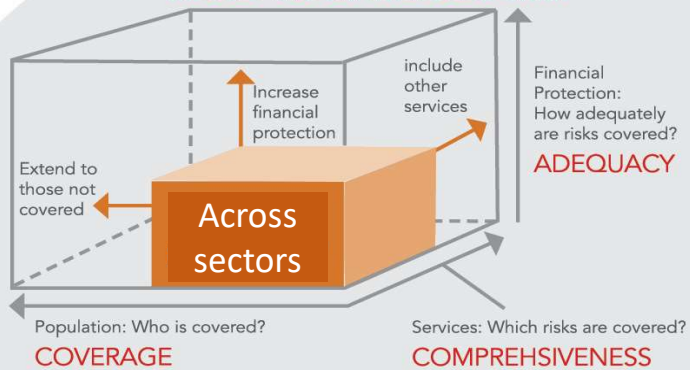


giz

What are we collectively trying to achieve?



**Better meeting people's needs via an increase in...**



**With an approach that is...**



**More Timely**



**More Cost-effective**



**More predictable**



**Ensuring Accountability**



**Prioritising long term sustainability**

For more on how these dimensions relate to the COVID-19 response, see [SPACE Strategy Decision Matrix](#)

## SPACE Social Protection Approaches to COVID-19: Expert advice helpline

*a supportive space to plan, challenge, and innovate your COVID-19 response through collaboration with leading global experts*

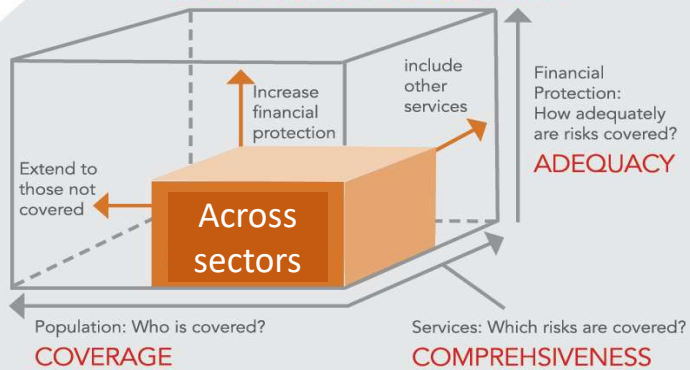




What are we collectively trying to achieve?



**Better meeting people's needs via an increase in...**



**With an approach that is...**



**More Timely**



**More Cost-effective**



**More predictable**

**Ensuring Accountability**

**Prioritising long term sustainability**

**On what basis? Contextual factors informing decisions**

- Type of shock
- Assessment of systems (SP & others)
- Prioritised opportunities, risks, trade-offs across key outcomes

**SHORT and LONG TERM focus, across different types**

**What roles can SP play in order to help achieve this?**

**A. Routine systems strengthening**



Ensuring routine programming is based on a solid understanding of the risks, shocks and stressors that your country typically faces

**B. Doing what you already do, better (design and implementation tweaks)**



Systems strengthening and preparedness so systems can be leveraged by temporary or emergency Programmes

**C. Coordinating with – and supporting – other sectors that are mandated to respond to shocks**



Preparedness to temporarily increase the value or duration of assistance



Preparedness to temporarily increase number of recipients

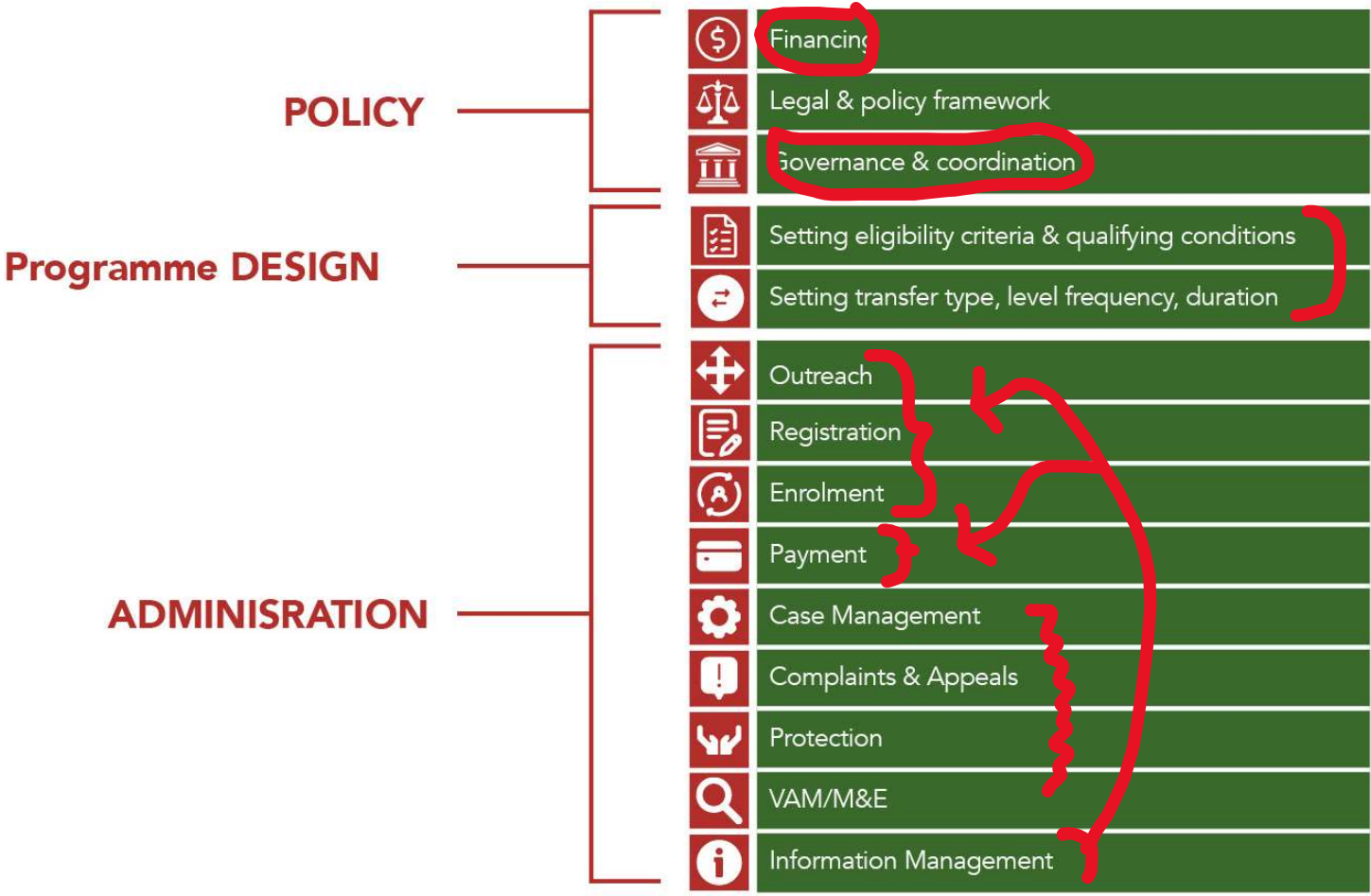


Preparedness for any other form of coordination (e.g. 'alignment' of objectives, targeting method, transfer value. etc.)

**SPACE Social Protection Approaches to COVID-19: Expert advice helpline**

*a supportive space to plan, challenge, and innovate your COVID-19 response through collaboration with leading global experts*





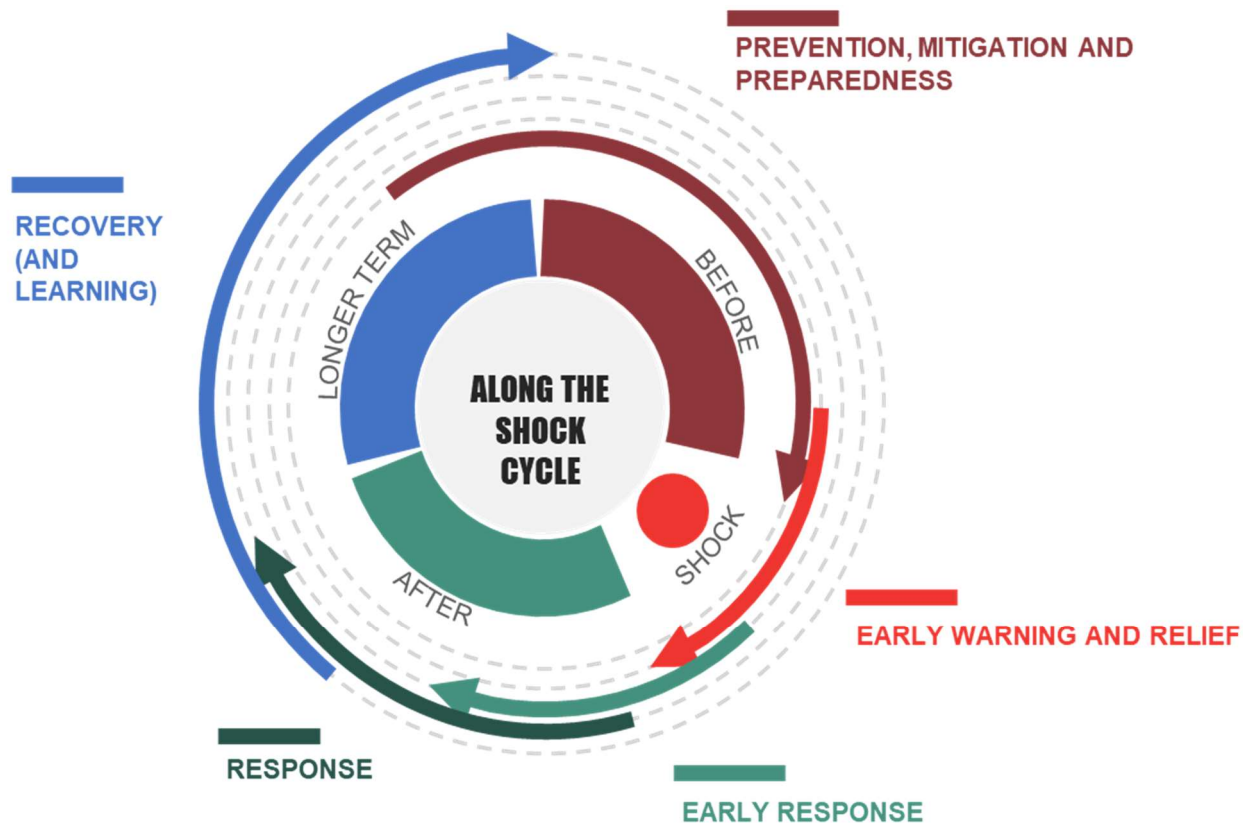
a) ROUTINE system strengthening and design tweaks

b) PREPAREDNESS for future shocks



**Strengths?** What can be leveraged  
**Weaknesses?** What can be strengthened

For more on how these dimensions relate to the COVID-19 response, see [SPACE Delivery Systems Matrix](#) – for details of preparedness measures, see [TRANSFORM](#)



Source: Beazley et al (2019)

## SPACE Social Protection Approaches to COVID-19: Expert advice helpline

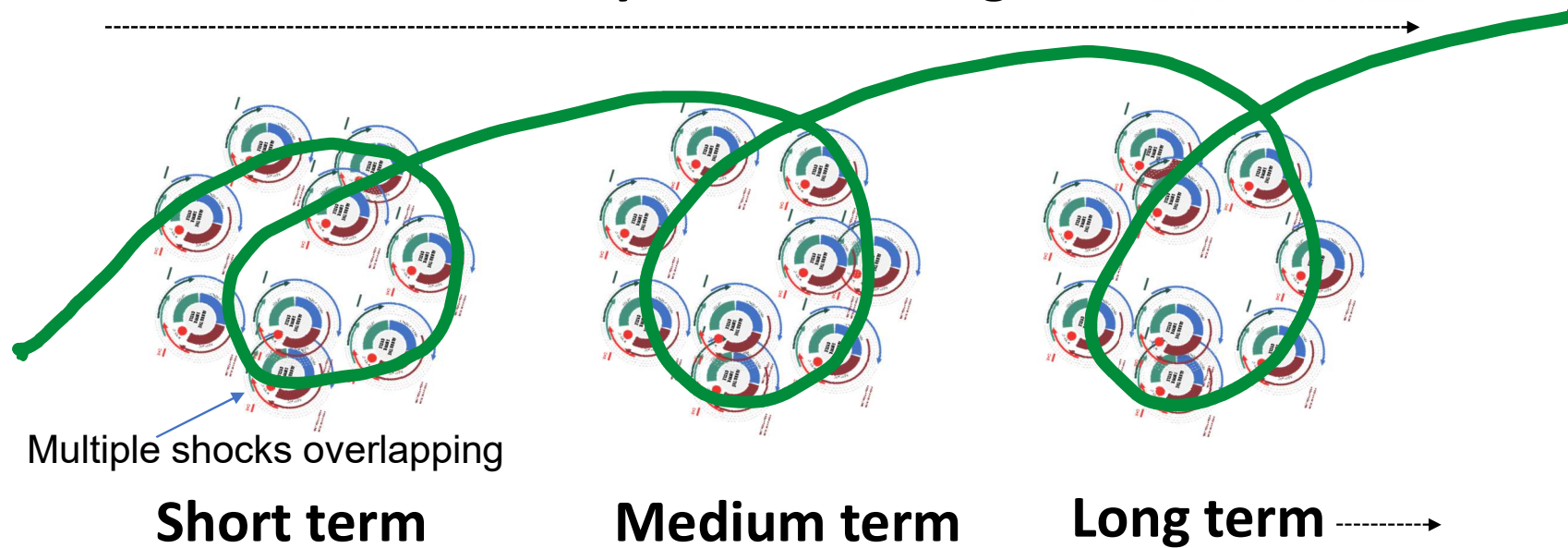
*a supportive space to plan, challenge, and innovate your COVID-19 response through collaboration with leading global experts*



giz



## From 'fire-fighting' to 'systems-building'



**SPACE Social Protection Approaches to COVID-19: Expert advice helpline**

*a supportive space to plan, challenge, and innovate your COVID-19 response through collaboration with leading global experts*



“Rethink political choices in a way that prioritizes the most vulnerable, protects societies from extreme inequality, and provides proactive and systemic—not reactive and ad hoc—responses to protect the population”

United Nations



**Special Rapporteur on extreme poverty and human rights**

Distr.: General  
11 September 2020

Original: English

**Looking back to look ahead: A rights-based approach to social protection in the post-COVID-19 economic recovery**

**C. Addressing climate change in recovery plans**

1 2 3 4 5 6 7 8 9 10 11 12 13 14 15 16 17 18 19 20 21 22 23 24 25 26 27 28 29 30 31 32 33 34 35 36 37 38 39 40 41 42 43 44 45 46 47 48 49 50 51 52 53 54 55 56 57 58 59 60 61 62 63 64 65 66 67 68 69 70 71 72 73 74 75 76 77 78 79 80 81 82 83 84 85 86 87 88 89 90 91 92 93 94 95 96 97 98 99 100

Download [here](#)

**SPACE Social Protection Approaches to COVID-19: Expert advice helpline**

*a supportive space to plan, challenge, and innovate your COVID-19 response through collaboration with leading global experts*



**giz**



THANK  
YOU



# Resources

## COVID related

- SPACE resources

- 1.
- 2.
- 3.
- 4.
- 5.
- 6.
- 7.
- 8.
- 9.

- Ongoing tracking of COVID responses via SP World Bank/Ugo Gentilini's weekly updated paper downloadable
- ILO's overarching framing
- SP.org , and
- CaLP's [go-to page](#) on resources etc
- More resources on SP and COVID-19



# Resources

WFP – “social protection and climate change”

## Box 2 – Different Social Protection Frameworks involving climate change, disaster risk and/or shock response

2010 - Adaptive Social Protection- Arnall et al. 2010- IDS; WB; DFID  
2012 - 3P&T – 3D Analytical Framework- Béné et al. 2012  
2013 - Climate-Responsive Social Protection- WB- Kuriakose et al. 2013  
2015 - Shock-responsive social protection- OPM, ODI, DFID- O'Brien et al. 2018  
2016 - BRACED resilience 3P framework- ODI, DFID- Ulrich and Slater 2016  
2016 - WB Adaptive Social Protection Programme in the Sahel  
2016 - Shock-responsive social protection in Latin America and the Caribbean- WFP & OPM- Beazley et al. 2016  
2017 - Adaptive Service Delivery Systems-WB  
2018 - WB Adaptive Social Protection  
2018 - 3D Resilience Framework- Béné et al. 2018

## Shock Responsive Social Protection

- (2020) TRANSFORM Curriculum on
- (2020) World Bank Adaptive Social Protection
- (2019) The – see in particular Chapter 3, Annex 1, and Annex 5 (links to ALL relevant literature)
- (2019) The on SP across the development humanitarian nexus + Operational notes also available
- (2019) : A Framework for Connecting Safety Nets and Humanitarian Assistance in Refugee Settings
- (2018) DFID & OPM SRSP and Synthesis