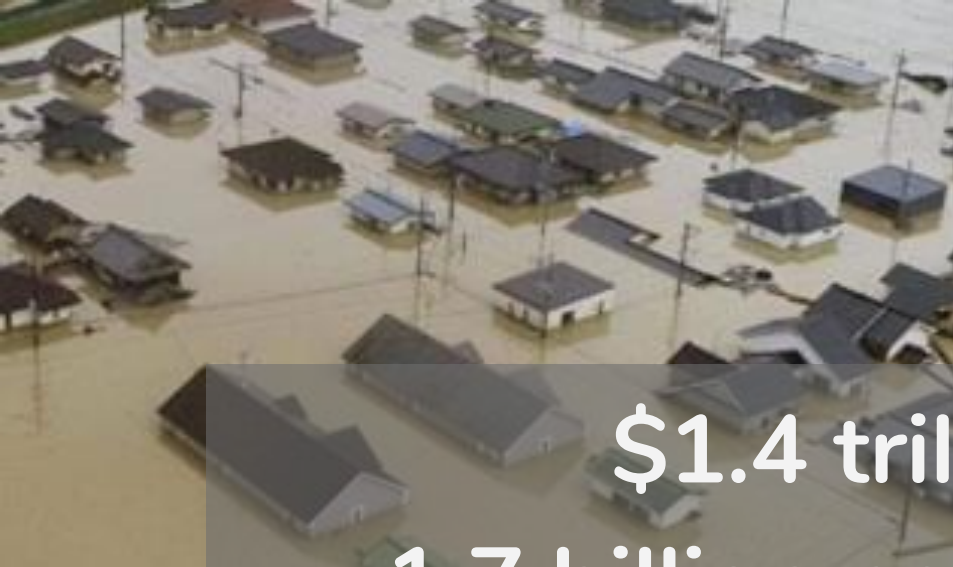


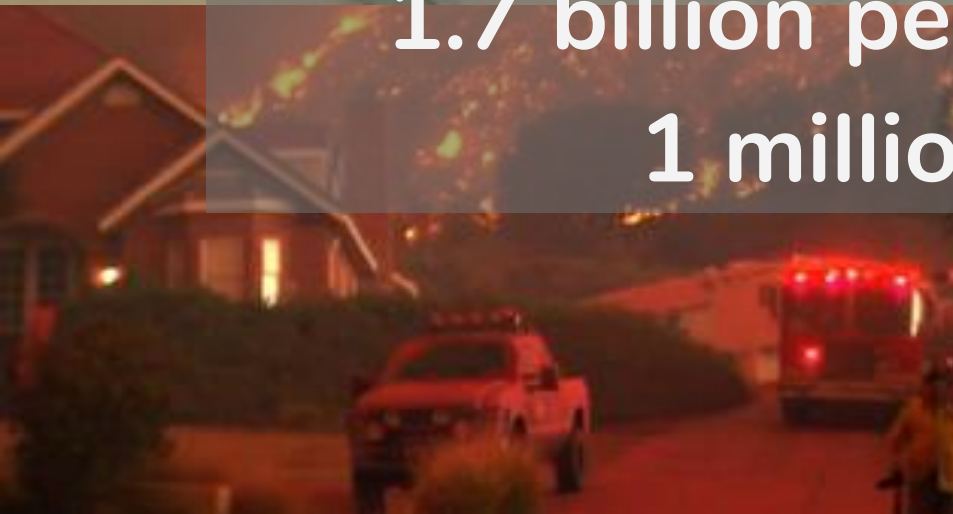
atmaCONNECT







\$1.4 trillion lost
1.7 billion people affected
1 million killed



Women are 14X more likely to die



Recovering from disasters: Social networks matter more than bottled water and batteries

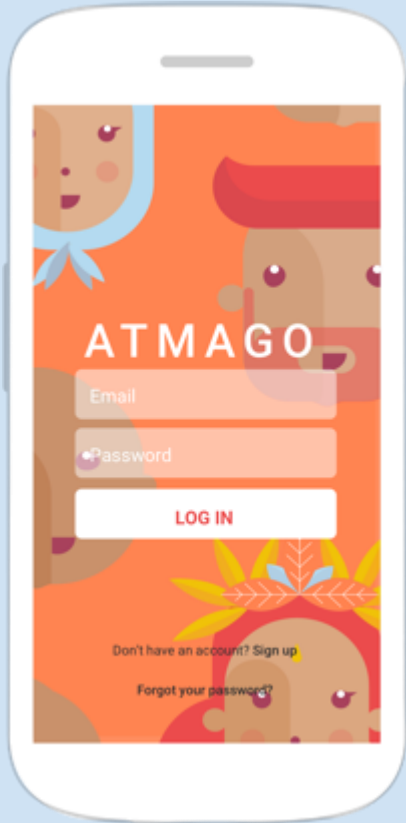
February 13, 2017 9.16pm EST



atma

atma GO

Neighbors Helping Neighbors



1

Hyper local

2

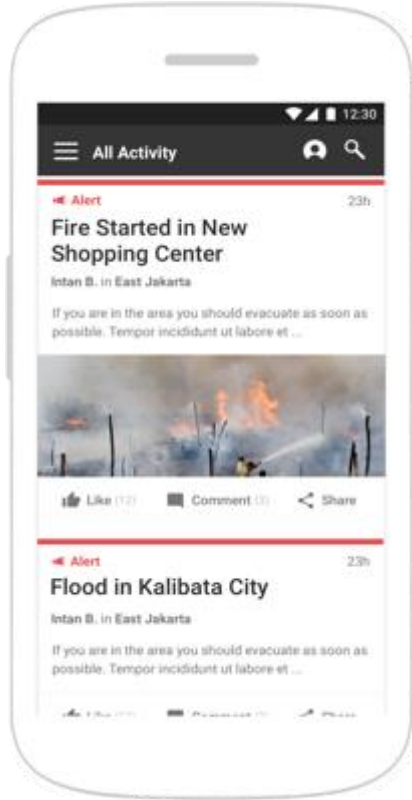
User-generated content

3

Focused on people helping people

4

Built for low resource settings



**Make Reports
Get Alerts**



**Post and Read
Local Information**



**Create and
Attend Events**



**Find Jobs
Build Entrepreneurship**

Per year, AtmaGo could save
Jakarta residents:



\$106M

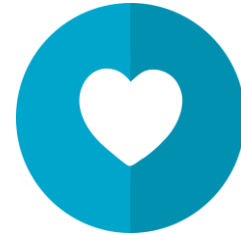
in avoided damage



\$4.6M

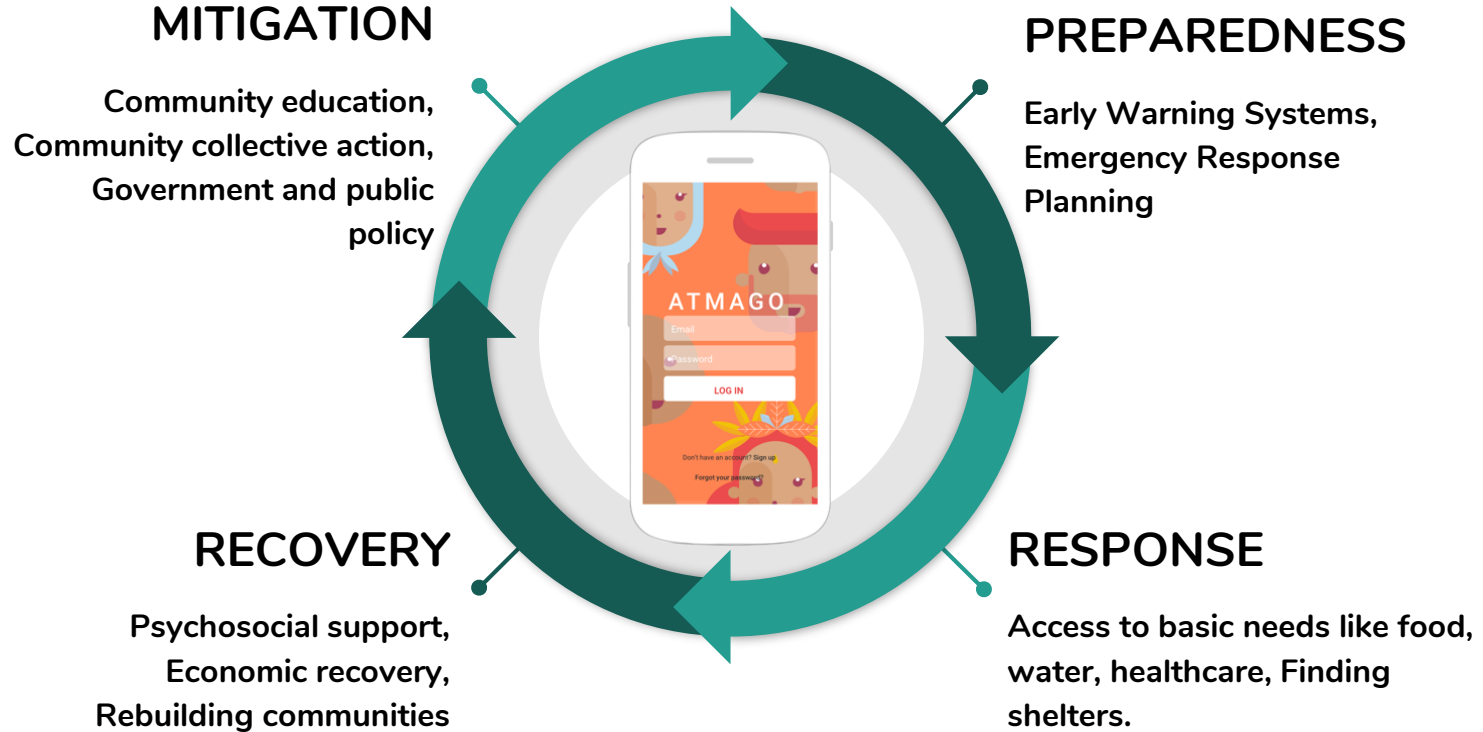
in avoided health care cost

AtmaGo could add:



6,980

years of healthy life





6,000,000+ users

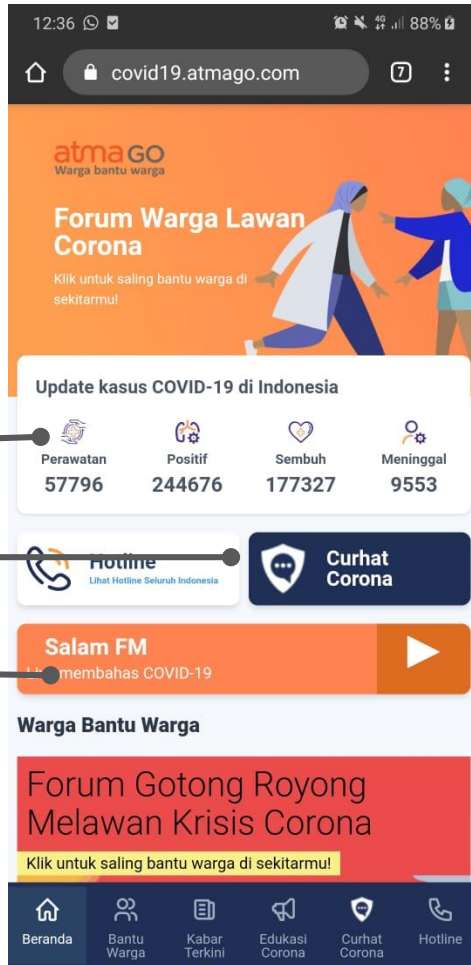
Indonesia



**American
Red Cross**



atma



Daily Stats

Psychosocial
Telecounseling

Radio
Streaming



Discussion
Forum

AtmaGo
Postings

Education
materials

Tech Roadmap

Increased speed
and robustness,
optimizing for low
bandwidth



Connect AtmaGo
content with private
and government
services.



Mesh
Networks for
Post Disaster
Communication



Use ML and AI to
identify community
vulnerabilities and
needs for resilience



...stories of ordinary people doing extraordinary things...

atma

AtmaConnect.org

atma@atmaconnect.org

