

# From Displacement to Development

A Resilience Approach.

Operationalizing the UN SG's action agenda on displacement

The Climate Academy 2023  
12 September 2023

## Some concepts and thoughts from the previous sessions:

- Evacuation, Relocation, Resettlement (Time)
- Rural-Urban migration, Migration, Displacement, Refuge (Status/Legal Framework)
- Planned VS Unplanned – Voluntary VS Forced



# Beyond Basic Needs: Dignity and Well-being. Shifting the Narrative around displacement.

## SCALE

- Localized issue – Broad impact
- Not only displaced and host communities
- Whole of a State approach
- 70M today – 216 M by 2050 how to provide solutions at scale ?

# DIGNITY, CHOICES, OPPORTUNITIES

- Human Mobility as an opportunity
- Dignity: the right to make an informed choice, but which options?
- Looking ahead, opportunities for Dev and investments.

# DIGNITY, CHOICES, OPPORTUNITIES

- Understanding the grass-root causes of the displacement that will be and its impact on people, territories, systems.
- Capitalizing on opportunities for growth, sustainable development and resilience.





# The Spatial Development Strategy for the Sahel

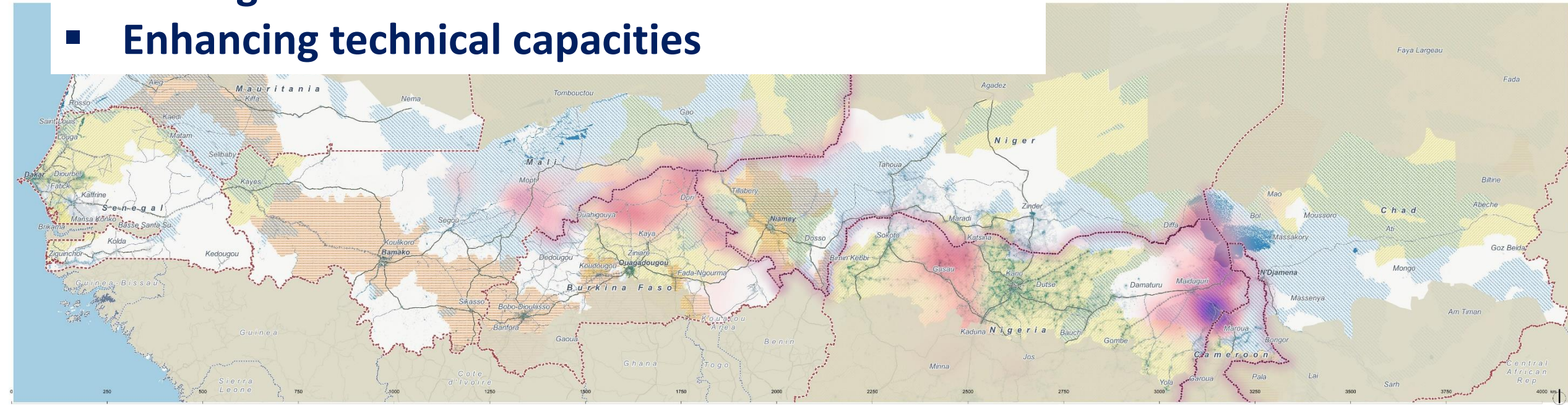
## Towards a Network of Safe, Inclusive, Resilient and Sustainable Human Settlements

- UNDP + UN Habitat
- Supported by Sweden, NORCAP, and more soon
- 8 countries in the Sahel Belt
- UNISS/OSCDC + UNCTs



# UNDERSTANDING TRANSITION(S)

- Strategic Spatial Analysis
- Regional and Integrated Holistic Approach
- Strategic Recommendations for Investments
- Enhancing technical capacities



## SDSS05 VIOLENT CONFLICTS AND CLIMATE HAZARDS IN THE SAHEL

SPATIAL DEVELOPMENT STRATEGY FOR THE SAHEL (SDSS). Towards a Network of Safe, Inclusive, Resilient and Sustainable Human Settlements. March 2023. UN Habitat/UNDP

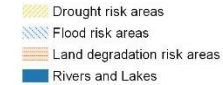
Conflict areas are based on data of the number of fatalities of conflict events (Battles, Violence against civilians and Explosions/Remote violence) over the period from January 2020 to September 2022. The delimitation of climate and disaster areas are based on information on areas of high vulnerability to flood, drought and land degradation over the period 2011-2019.

Data Sources: Armed Conflict Location & Event Data Project (ACLED), Global Roads Inventory Project (GRIP, 2018), Integrated Context Analysis - World Food Programme (WFP, 2017), Aqueduct Global Maps 3.0 Data-World Resources Institute (WRI, 2019), United Nations Office for the Coordination of Humanitarian Affairs (OCHA), WorldPop (2020), World Wild Fund (WWF). Disclaimer: The designations employed and the presentation of material on this map do not imply the expression of any opinion whatsoever on the part of the Secretariat of the United Nations concerning the legal status of any country, territory, city or area or of its authorities, or concerning the delimitation of its frontiers or boundaries.

### Conflict events density



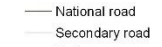
### Climate Hazards



### Population density 2020



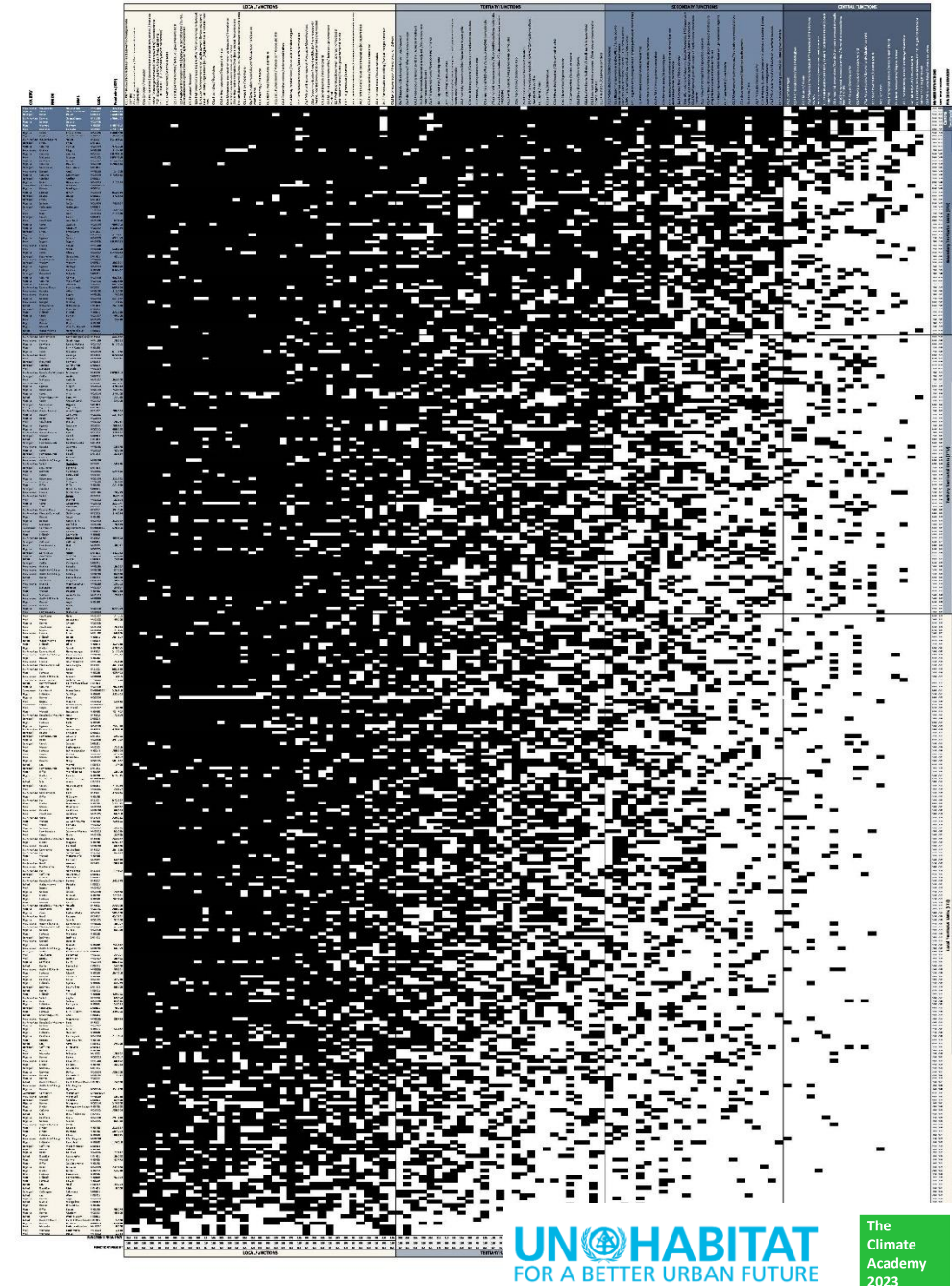
### Transport infrastructure





# The Matrix of Functions and the SDF

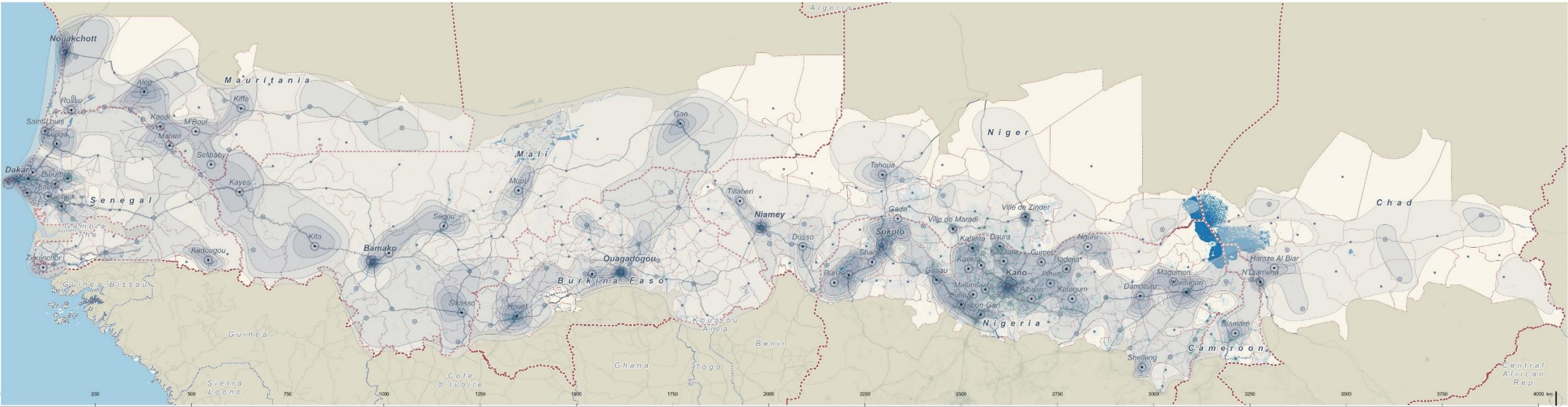
- Understand the complexity of a territory and Identify areas with high levels of centrality and those that need more development.
- analyze data from a variety of sources, including surveys, censuses, and administrative records  
Regional and Integrated Approach
- Strategic Recommendations for Investments and resources allocations.





# A TOPOGRAPHY OF FUNCTIONS/INDICATORS LINKED TO THE SDGs

Allowing for multi-sectorial, multi-scale analysis and decision making.



**SDSS09 FUNCTIONAL TOPOGRAPHY OF THE SAHEL**

SPATIAL DEVELOPMENT STRATEGY FOR THE SAHEL (SDSS). Towards a Network of Safe, Inclusive, Resilient and Sustainable Human Settlements. March 2023. © UN Habitat/UNDP

Data sources: Matrix of Functions (UN Habitat, 2022), WorldPop-University of Southampton-UK (2020), United Nations Office for the Coordination of Humanitarian Affairs (OCHA), World Wild Fund (WWF)

Disclaimer: The designations employed and the presentation of material on this map do not imply the expression of any opinion whatsoever on the part of the United Nations concerning the legal status of any country, territory, city or area or of its authorities, or concerning the delimitation of its frontiers or boundaries

**Levels of Centrality**

- Level 1
- level 2
- level 3
- level 4
- level 5
- level 6
- level 7
- level 8
- level 9
- level 10

**Functional categories**

- Central Human Settlements
- Secondary Human Settlements
- Tertiary Human Settlements
- Local Human Settlements

**Population density (hab/km2)**

- < 250
- 250-1000
- 1000-5000
- 5000-10000
- >10000

**Transport infrastructure**

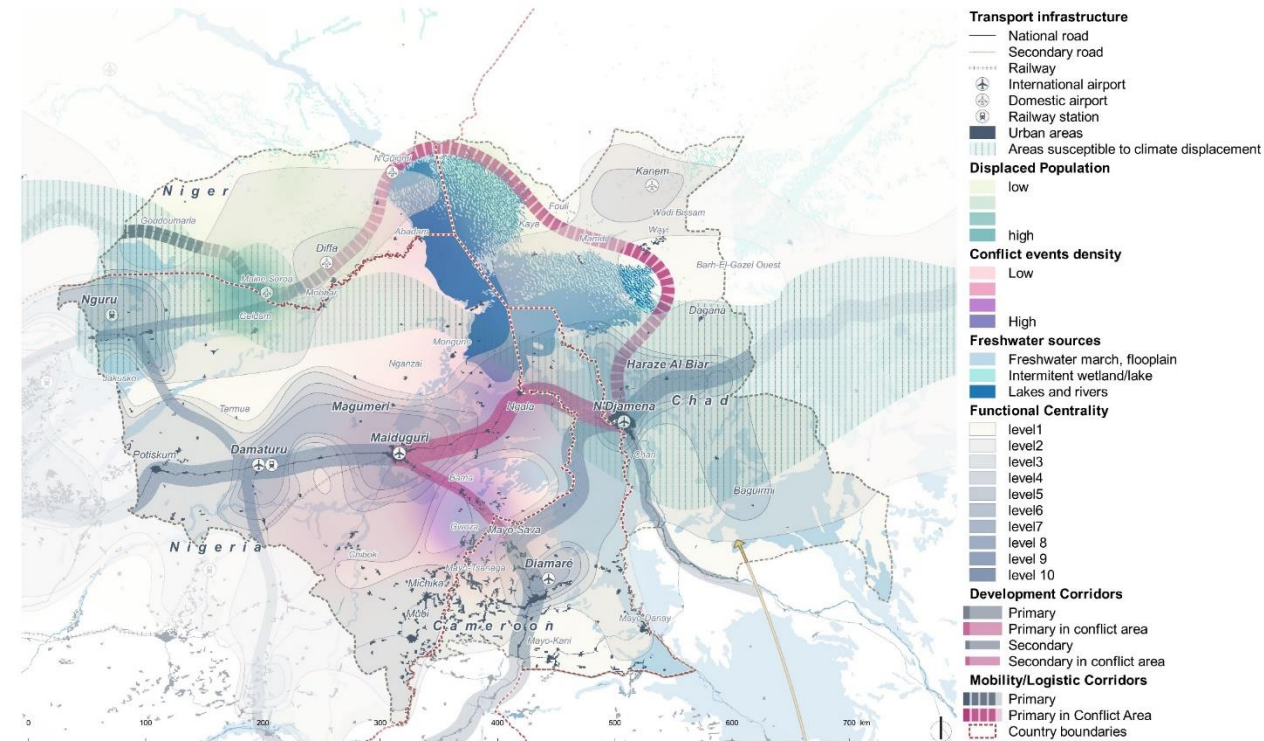
- National road
- Secondary road
- Railway

- Rivers and Lakes
- District/Cercles/LGA boundaries
- Sahel's Country boundaries
- Country boundaries





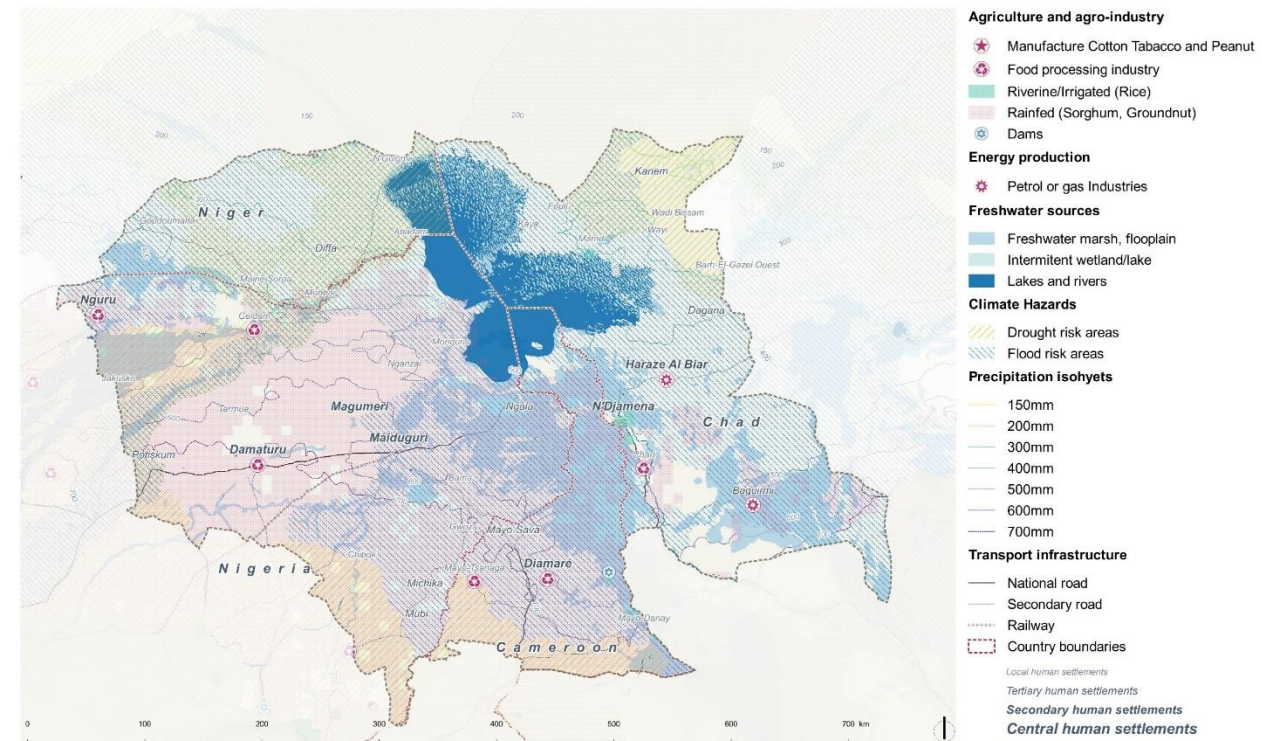
# INTEGRATING HUMAN MOBILITY INTO SPATIAL DEVELOPMENT STRATEGIES



**SDSS21 MOBILITY AND SOCIO-ECONOMIC DEVELOPMENT IN THE LAKE CHAD BASIN**

SPATIAL DEVELOPMENT STRATEGY FOR THE SAHEL (SDSS). Towards a Network of Safe, Inclusive, Resilient and Sustainable Human Settlements. March 2023. © UN Habitat/UNDP

Sources: Copernicus Global Land Service Global (CGLS, 2020) Human Settlement Layer (GHSL, 2020), Famine Early Warning Systems Network (FEWSNET 2017-2021), Food and Agriculture Organization (FAO, 2015), Matrix of Functions (UN Habitat, 2022), Sahel and West Africa Club Secretariat (SWAC, 2014), Union économique et Monétaire Ouest Africaine (UEMOA, 2018), United States Geological Survey (USGS), United Nations Office for the Coordination of Humanitarian Affairs (OCHA), World Wildlife Fund (WWF, 2018)

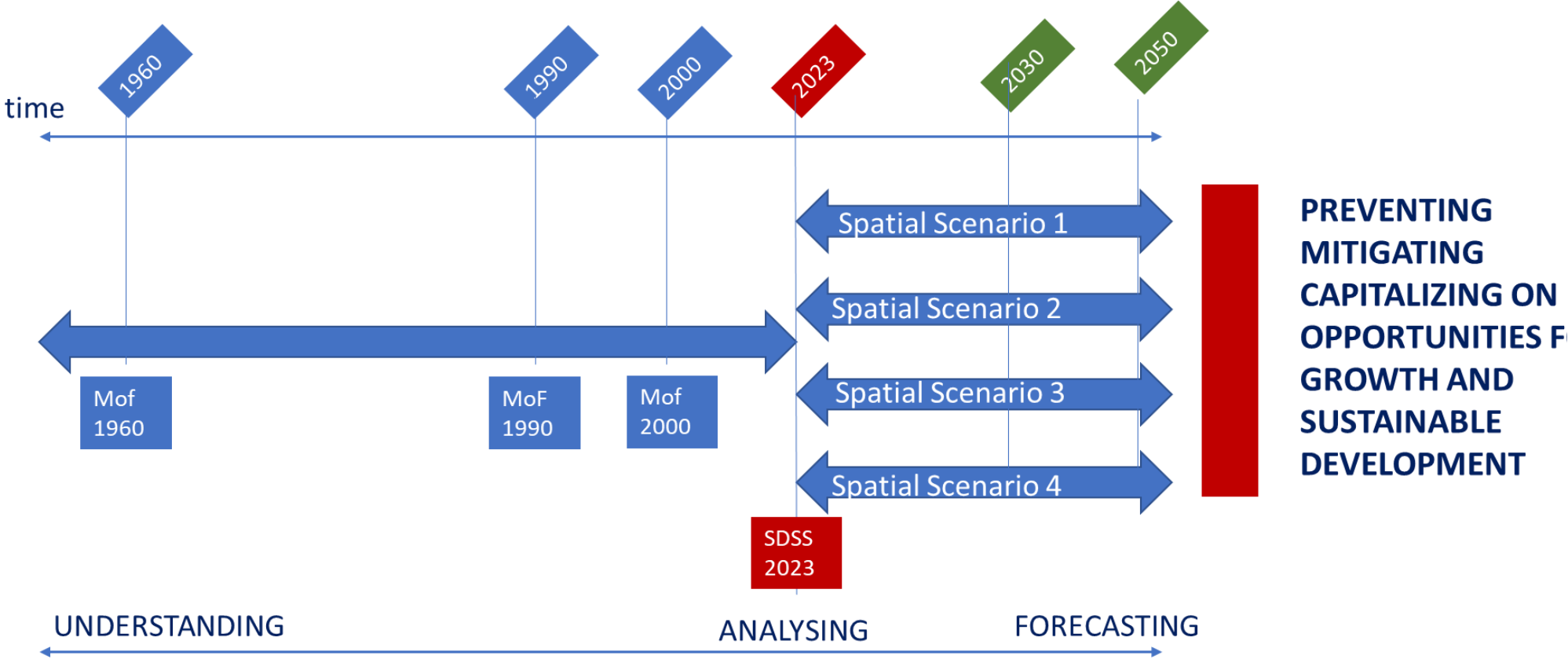


**SDSS22 NATURAL RESOURCES AND ECONOMIC OPPORTUNITIES IN THE LAKE CHAD BASIN**

SPATIAL DEVELOPMENT STRATEGY FOR THE SAHEL (SDSS). Towards a Network of Safe, Inclusive, Resilient and Sustainable Human Settlements. March 2023. © UN Habitat/UNDP

Sources: AQUASAT-Food and Agriculture Organization (FAO, 2019), Aqueduct Global Maps 3.0 Data-World Resources Institute (2019), Inte Food Programme (2017), Human Settlement Layer (GHSL, 2020), Global Roads Inventory Project (GRIP, 2018), Matrix of Functions (UN Ha et Monétaire Ouest Africaine (UEMOA, 2018), United States Geological Survey (USGS), United Nations Office for the Coordination of Human Settlements (UNHCR, 2018), United States Geological Survey (USGS), United Nations Office for the Coordination of Humanitarian Affairs (OCHA), World Wildlife Fund (WWF, 2018)

# Understand, Predict, Anticipate and Capitalize on ongoing transition(s) as opportunities for Resilience and SDGs.





# Thank you!



**Alberto Preato**

Urban Resilience and Human Mobility Expert  
United Nations Human Settlement Programme

Headquarters | Nairobi | Kenya

Phone: +254 (0)790 660 978

Email: [alberto.preato@un.org](mailto:alberto.preato@un.org)

**UN**  **HABITAT**