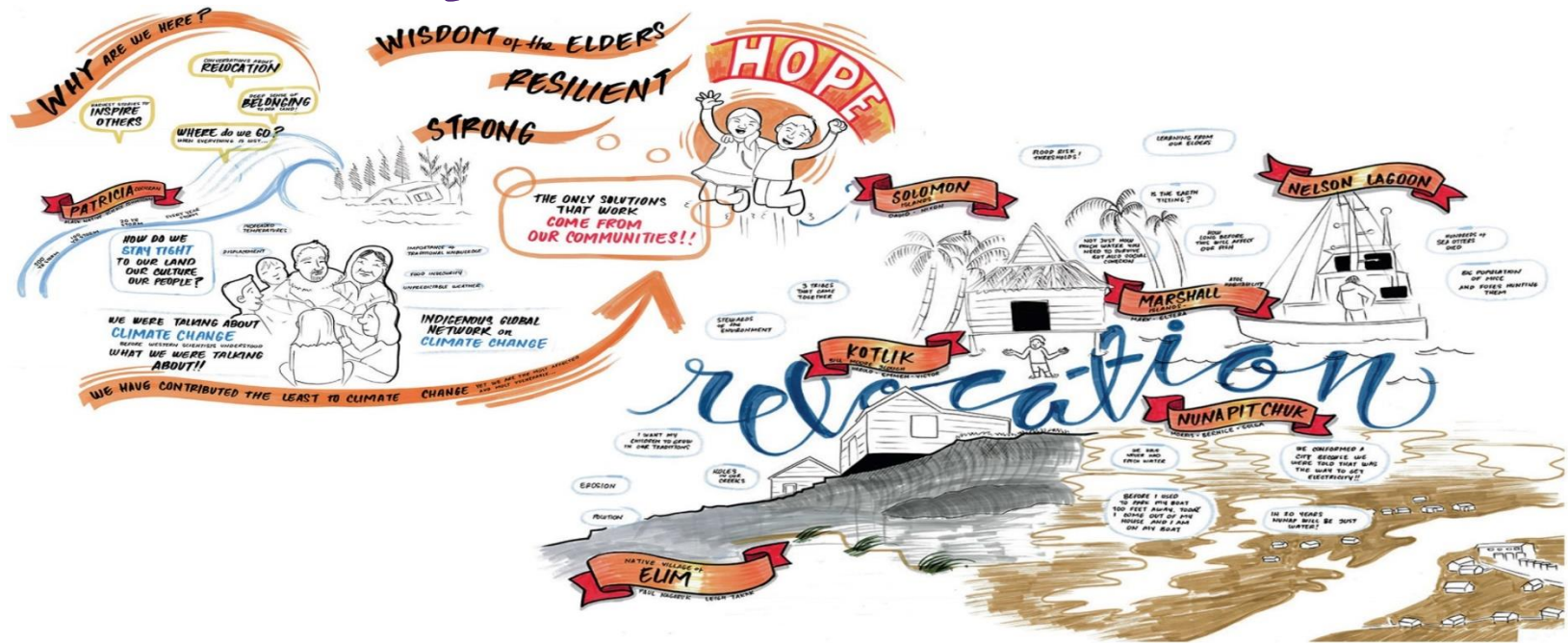


Rights, Resilience and Community-led Relocation



Robin Bronen, J.D., PhD
 robin.bronen@akijp.org
 Alaska Institute for Justice

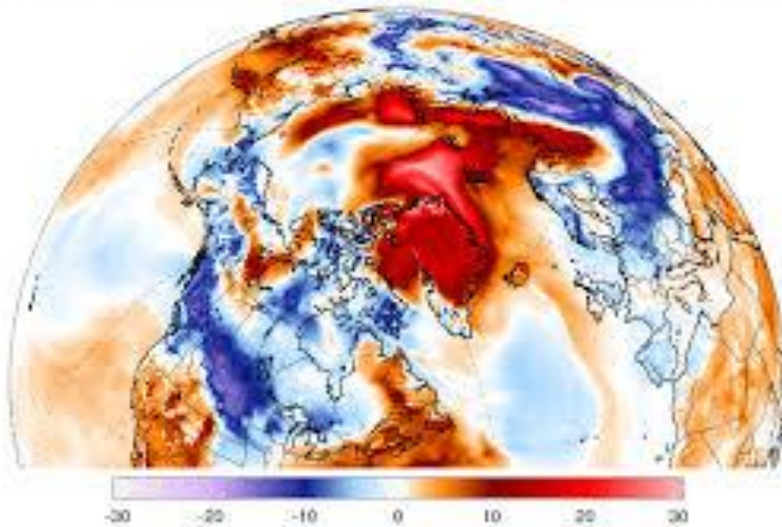
Climate Academy 2023

Tipping Points of Community Habitability: Polar Amplification

January - February 2018

GFS T 2m Anomaly (°C) [1979-2000 base]
Valid Thu 0000Z, Feb. 09, 2017 | 000h

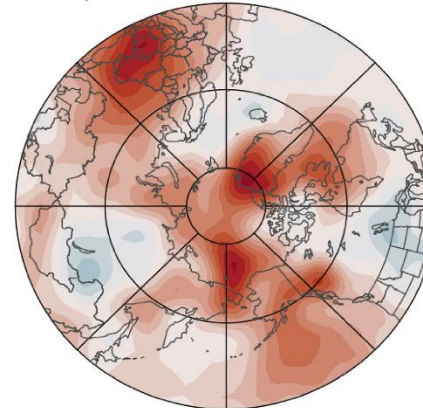
ClimateReanalyzer.org
University of Maine | Climate Change Institute



61 hours above freezing temperatures

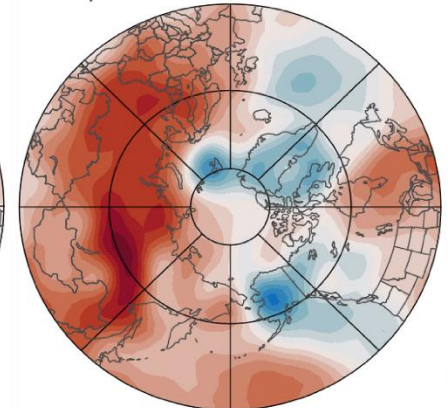
2019

a) Autumn 2019

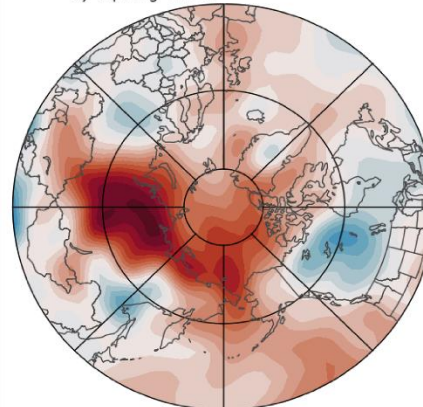


2020

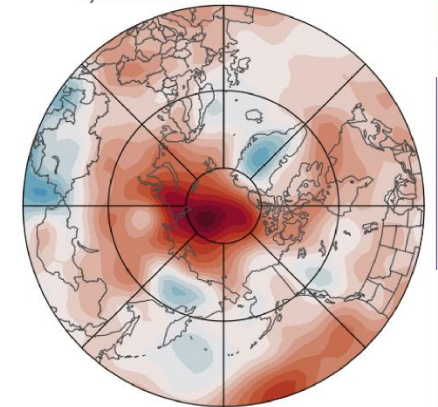
b) Winter 2020



c) Spring 2020

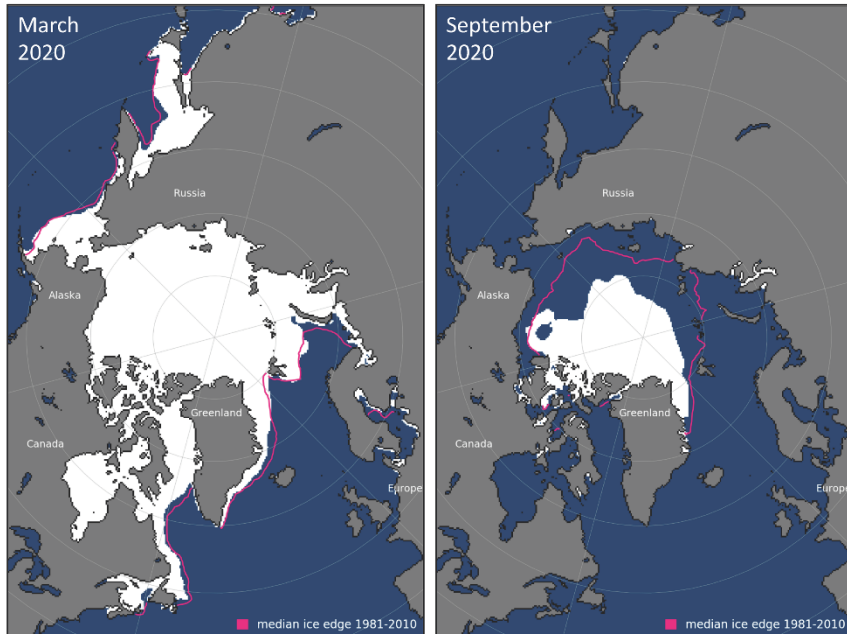


d) Summer 2020



Tipping Points of Community Habitability

Combination of repeated and frequent extreme weather events and slow-ongoing environmental change



Decreased arctic sea ice: 2007-2023 of the satellite record are the lowest extents in the satellite record

Usteq – catastrophic land collapse

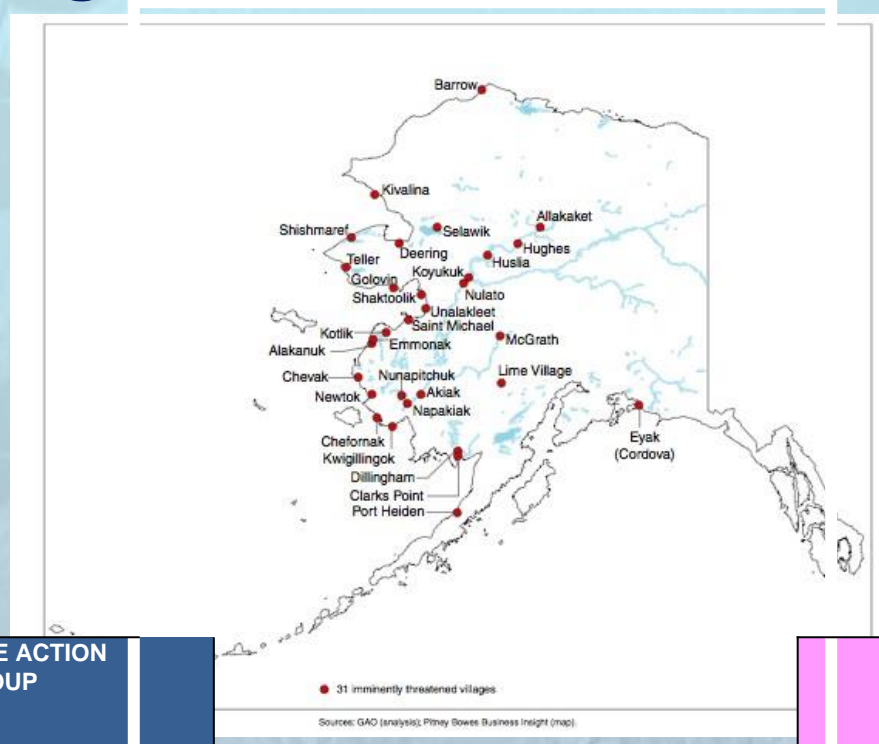
76 Villages Imminently Threatened

Flooding Erosion Thawing Permafrost

RECOMMENDATIONS REPORT TO
THE
GOVERNOR'S SUBCABINET
ON CHANGE CLIMATE



FINAL REPORT
FROM THE
IMMEDIATE ACTION WORKGROUP
APRIL 17, 2008



Requesters
United States Government
Accountability Office

GAO

June 2009

ALASKA NATIVE VILLAGES
Limited Progress Has Been Made
on Relocating Villages
Threatened by Flooding and
Erosion

GAO-09-551

IMMEDIATE ACTION
WORKGROUP

RECOMMENDATIONS
TO THE
GOVERNOR'S SUBCABINET
ON
CLIMATE CHANGE
MARCH 2009

Government Accountability Office
Reports ('03 '09 '22)

Immediate Action Work Group
Alaska Sub-Cabinet on Climate
Change Reports ('08 & '09)

US Army Corps of Engineers
Assessment ('09)

Alaska Baseline Erosion
Assessments

<http://www.poa.usace.army.mil/AK/E/Home.html>

U.S. Army Corps of Engineers
2009

Planned Community Relocation: What is it?

- **Voluntary**
- **Disaster Risk Reduction:** prior to displacement of populations caused by extreme weather event
- **Planned: long-term process**
- **Protect Human Rights**
- **Community:** Rebuild homes, infrastructure and livelihoods
- **Maintain Social and Kinship Connections**

Relocation Principles Based on Human Rights

Climate-induced community relocations are perhaps the greatest human rights challenge of our time. Those who have least contributed to our climate crisis are now the first to face the permanent loss of their homelands, and thus, need to relocate. Population relocation affects the human right to life and self-determination, as well as a wide range of social, economic, and cultural rights. Alaska Native communities are among the first communities to decide that relocation of their entire community is the only long-term adaptation strategy to protect the lives of community residents from climate change impacts.

Universal Declaration of Human Rights (UNHR)

International Covenant on Economic, Social, and Cultural Rights (ICESCR)

Convention on the Rights of the Child (ICRC)

United Nations Declaration on the Rights of Indigenous Peoples (UNDRIP)

International Covenant on Civil and Political Rights (ICCPR)

Convention on the Elimination of All Forms of Discrimination Against Women (CEDAW)

RIGHT TO LIFE

RIGHT TO SELF-DETERMINATION

RIGHT TO PRACTICE AND REVITALIZE CULTURAL TRADITIONS

RIGHT TO SUBSISTENCE

RIGHT TO IMPROVE LIVELIHOODS

RIGHT TO SAFE DRINKING WATER

RIGHT TO SAFE AND SANITARY HOUSING

PERMAFROST PATHWAYS

St. Lawrence
Island

Nome

Chinik
(Golovin)

Norton Sound

Yukon River

ALASKA

Chevak

Nunapitchuk

Akiachak
Bethel
Akiak
Kwethluk

Kipnuk
Kwigillingok

Kwinhagak
(Quinhagak)

Kuskokwim
Bay

Dillingham

Bristol Bay

Naknek
Lagoon

Nelson Lagoon

Tribal Governments
in Permafrost Pathways, 2023

0 25 50 100 Miles



**TRIBAL GOVERNMENT
RESOLUTIONS**

**FUNDING TO TRIBAL
GOVERNMENTS TO HIRE
FULL-TIME STAFF**

**CONVERGENCE
SCIENCE AND DATA
SOVEREIGNTY:
COMMUNITY-BASED
ENVIRONMENTAL
MONITORING**

**DECOLONIZE
GOVERNANCE
SYSTEMS: POLICY
ANALYSIS AND
ADVOCACY, INCLUDING
LITIGATION**

**ANNUAL ADAPTATION
WORKSHOP**

THANK YOU

CLIMIGRATION

NOTES from
ROBIN BRONEN'S
WORK; UNIVERSITY
of ALASKA

"FORCED
MIGRATION due
to CLIMATE CHANGE"

CURRENTLY
NO ORGANIZED
INSTITUTIONAL
SYSTEM
in place
to meet unique
COMMUNITY
needs

SPECTRUM of
ENVIRONMENTAL
EVENTS
causes people to
leave THEIR
COMMUNITIES

150 MILLION
PEOPLE WILL BE
DISPLACED by 2050
- IPCC

yes!

It's a
(PRETTY BIG)
THING!

MAJORITY
of
CLIMIGRANTS
WILL MIGRATE
WITHIN
COUNTRY of
ORIGIN

"TYPICAL"
REFUGEE STATUS
DOES NOT APPLY

ONGOING
CLIMATE-INDUCED
ECOLOGICAL CHANGES
• IMPACT INFRASTRUCTURE
• HEALTH CLINICS, SCHOOLS
• LIVELIHOODS & WELL-BEING
• COMMUNITY is
NO LONGER SUSTAINABLE
for ecological REASONS

WHY?

erosion

FLOODING

sea level
Rise

Water &
FOOD SECURITY

COMPLETELY
NEW PROTOCOL
needed to DEFINE
DISPLACEMENT CATEGORY

! FAILURE to RECOGNIZE SIGNALS
of ecosystem changes will impede
COMMUNITY'S CAPACITY to ADAPT

DIFFERS FROM ONE-OFF
CATASTROPHIC ENVIRONMENTAL
EVENTS

WENDI PILLAYES @ WENDI1322

