

# ASSESSING COMMUNITY-BASED FLOOD RISK COMMUNICATION SYSTEMS FOR PERSUASIVE RELOCATION:

---

## A CASE STUDY OF WEIJA-GBAWE MUNICIPALITY

BY: FRANK KWESI NANSAM-AGGREY

14/07/2023

2023 CLIMATE ACADEMY-ONLINE VERSION



# OUTLINE

*“What do decision-makers in policy and communities of practice need to know about Planned Relocation to support communities in making just and timely mobility decisions related to climate change?”*

Introduction

Background and  
Context

The Project and Study  
Area

Perennial Flooding  
and Measures

PRIMED Project

Emergent Study

# INTRODUCTION

**Discuss Planned Relocation from 3 Perspectives  
In the Ghanaian Context**

Not yet formalized

**Policy**

**Practice**

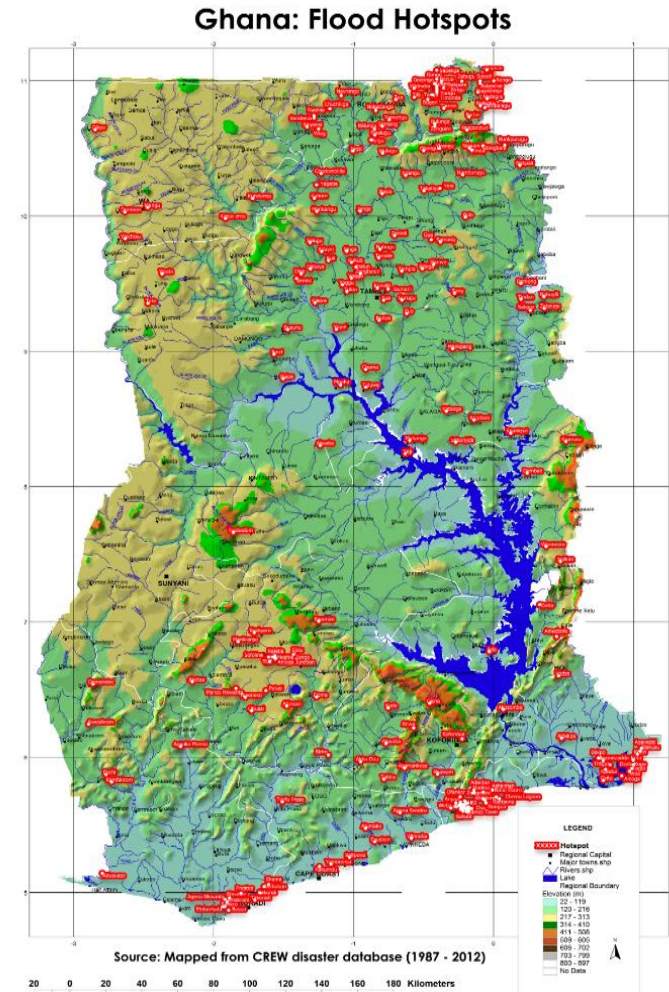
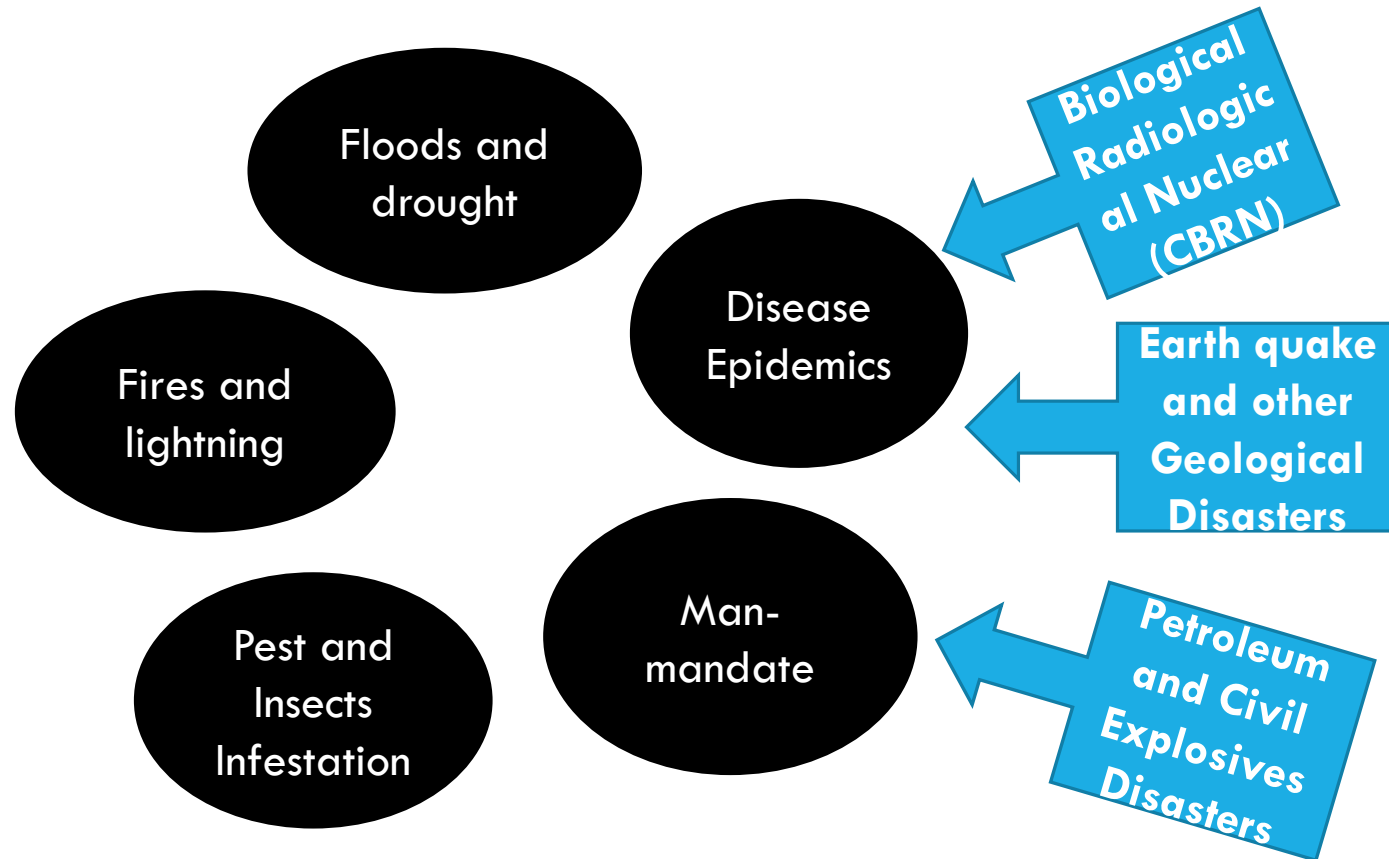
**Community**

Urban Transformation  
and DRM reasons

Project and Research

Lessons and  
Observations

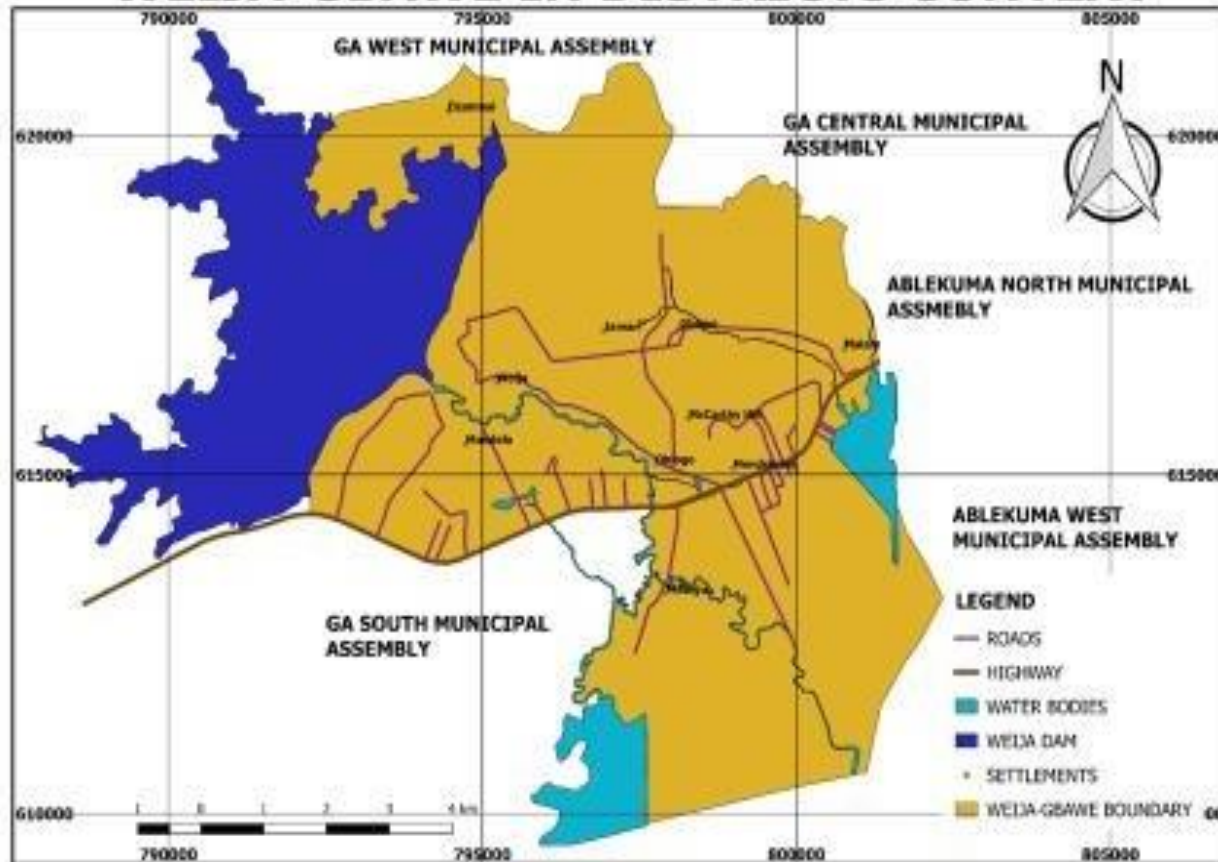
# BACKGROUND AND CONTEXT: HAZARDS IN GHANA





# PROJECT AND STUDY AREA WEIJA-GBAWE MUNICIPALITY

## WEIJA-GBAWE IN DISTRICTS CONTEXT



Occupies a land area of approximately 502.31 sq. km with about 120 settlements.

Population:  
213,674 (2021 PHC report)  
104,910 MALES &  
108,764 females

# PERENNIAL FLOODING



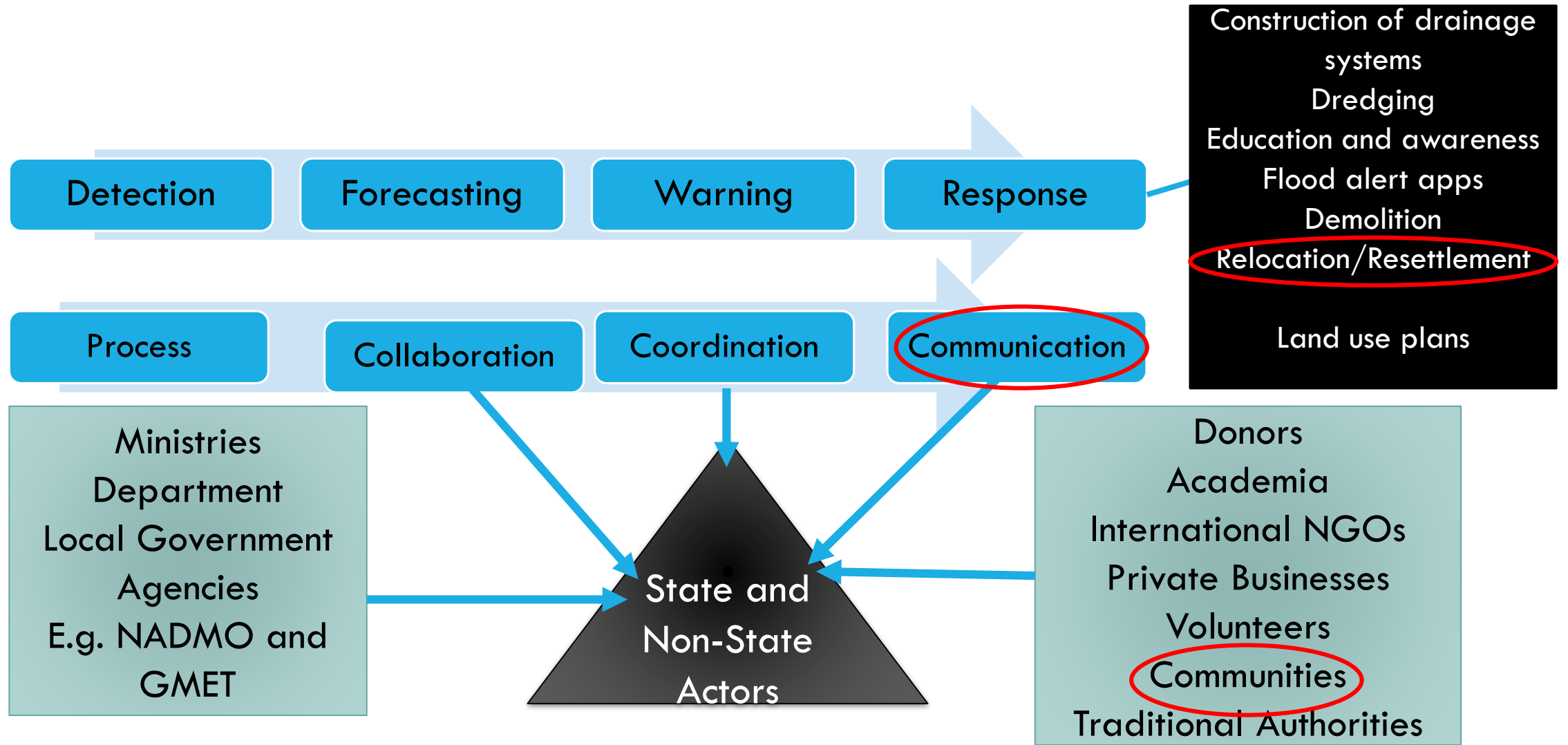
## Causes:

Spillage of Dam that supplies 80% of Accra's Water, lowland areas, building on water ways and sea level rise

## Impact:

Displacement (E.g. 2000 people in 2023)  
Loss of Properties  
Loss of Livelihoods

# RESPONSE MEASURES





# THE PRIMED PROJECT



## **Partnership:**

IESS/UG

NADMO

Weija-Gbawe Municipality

Community

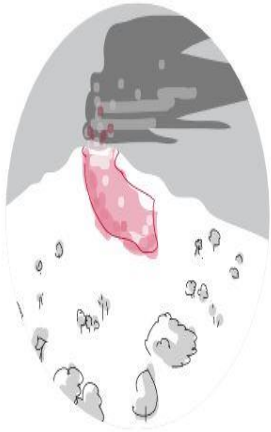
Strategic  
approach to  
strengthen  
community  
preparedness  
and resilience

For disaster risk reduction  
(DRR) and climate change

Through harnessing  
community innovative  
systems and Participation

# THEORETICAL REVIEW

Risk and the context of hazard, exposure and vulnerability



There is no such thing as a **natural disaster**, only **natural hazards**



We make **choices** as to where we inhabit, how we build and what research we do



Risk is the combination of **hazard, exposure** and **vulnerability**

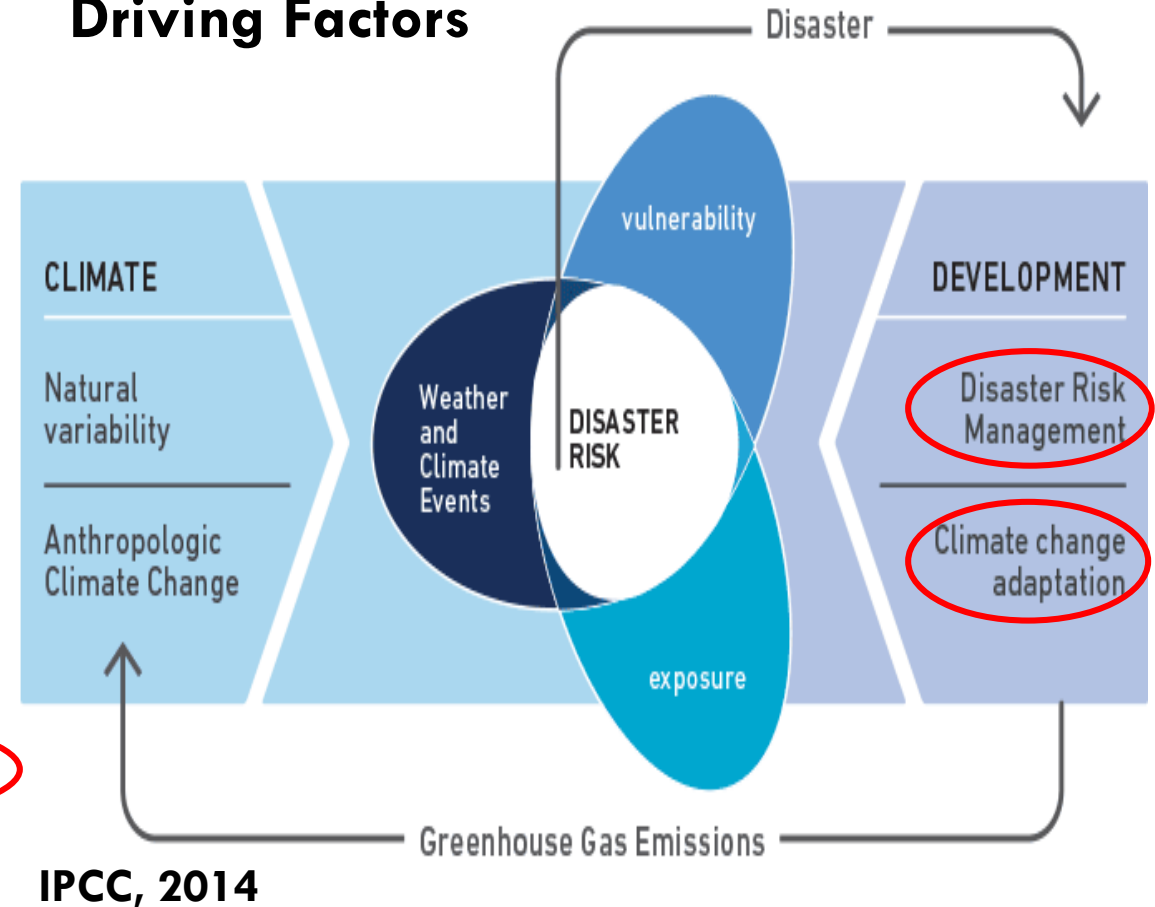


**Death, loss** and **damage** is the function of the context of hazard, exposure and vulnerability

$$\text{Risk} = \text{Hazards} \times \text{Vulnerability} \times \text{Exposure} \times \text{Capacity}$$

(Source: UNDRR 2019)

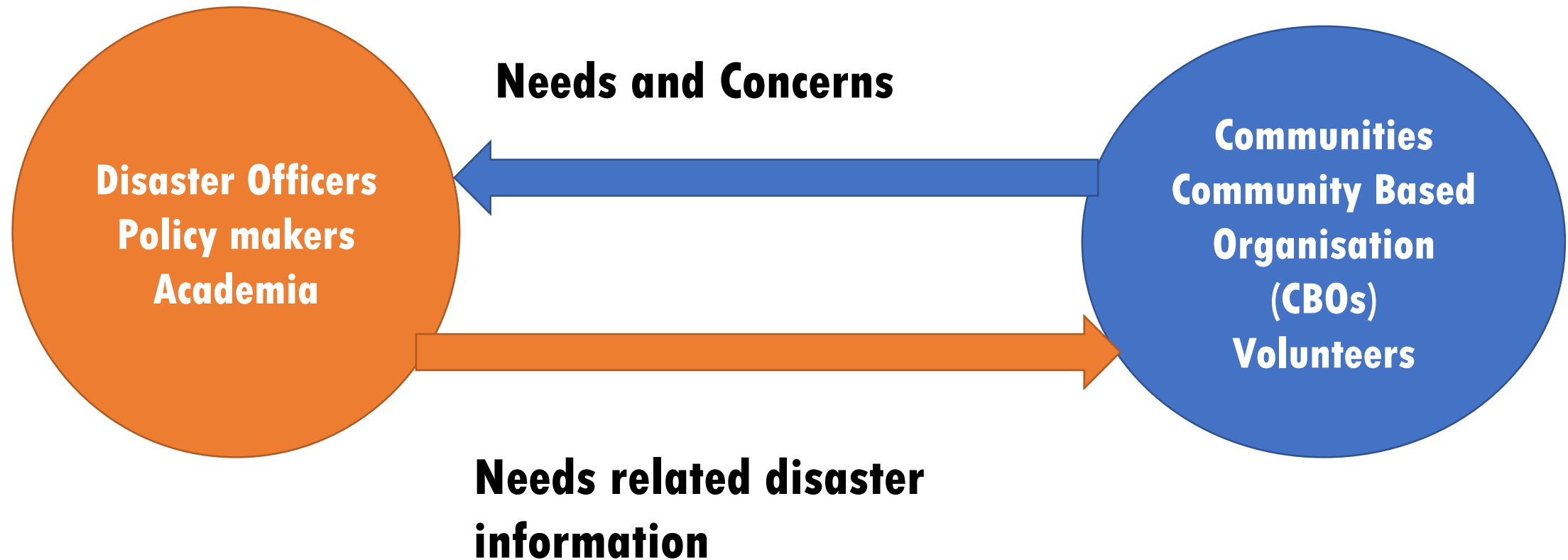
## Driving Factors



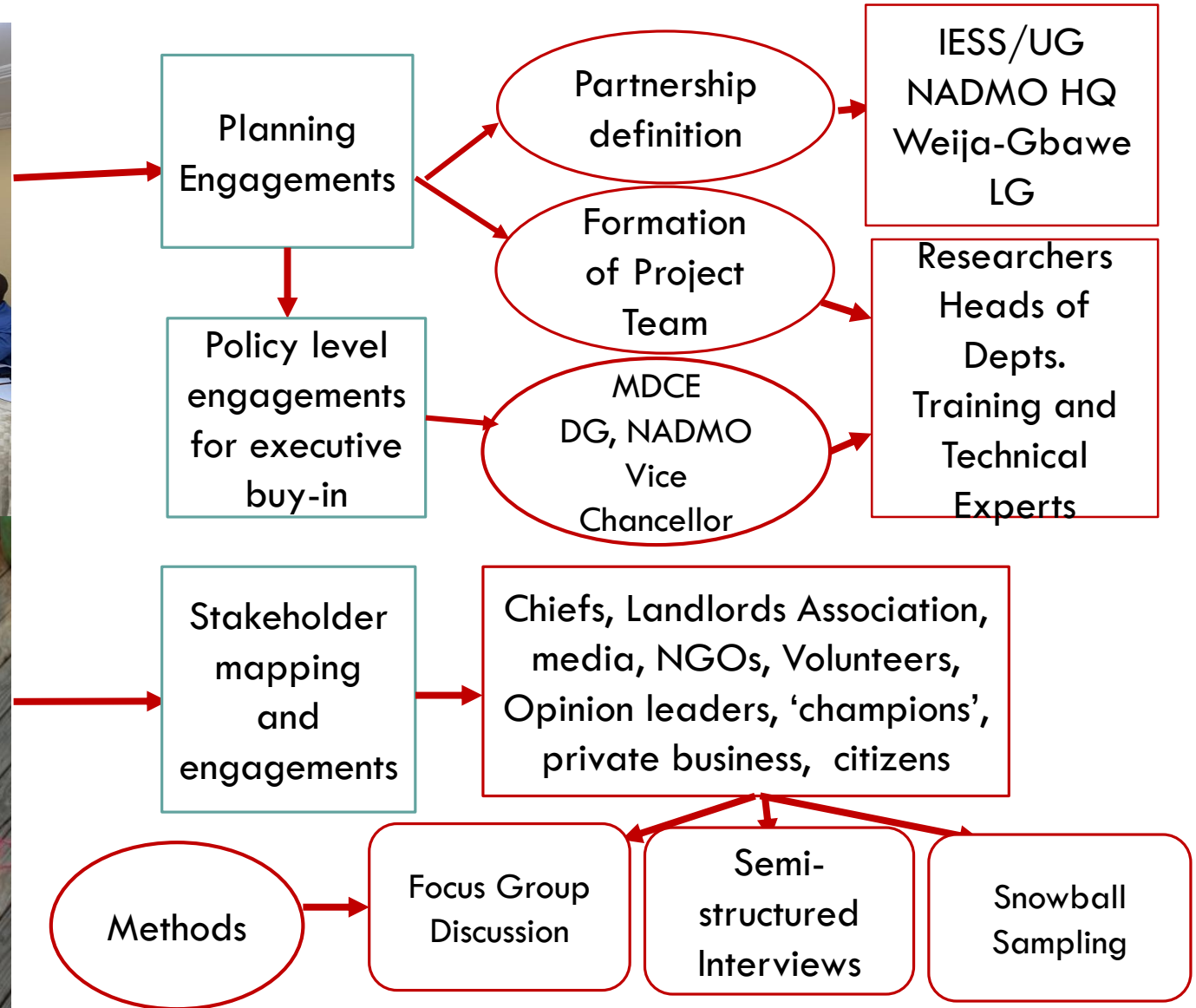
# Conceptual Framework

**Information sender**

**Information receiver**



# IMPLEMENTATION PROCESS



# IMPLEMENTATION PROCESS CONT.



Sensitization/Desk  
Review

Situational Analysis

Presentation and  
Validation of Findings

Engagement on  
adaptation options

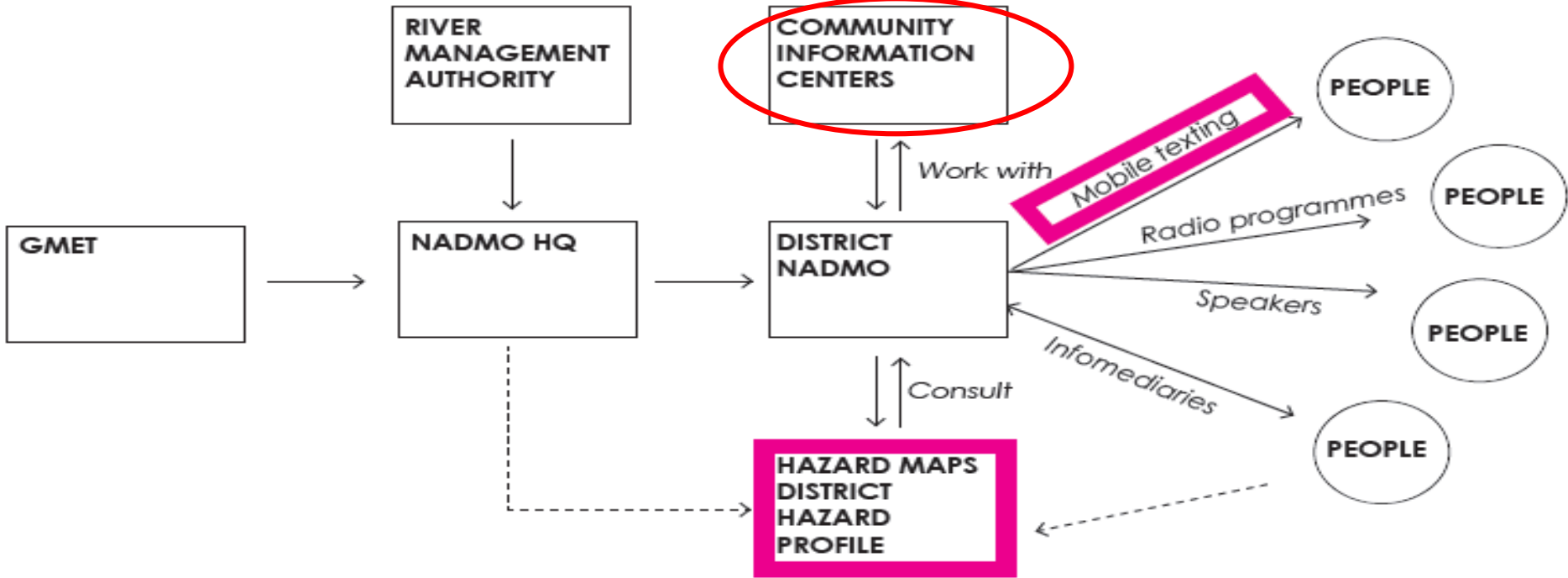
Improvement and  
Installation of C'ty  
Information  
Centers (CICs)

Signing of MoU  
CICs  
Operationalization  
Exist Plan



# COMMUNICATION AS AN ADAPTATION TOOL

## Synthesizing the Community-Based Communication Systems in Weija-Gbawe for Persuasive relocation



**1**

Abnormal weather conditions observed/predicted at GMet. GMet notifies NADMO

**2**

NADMO cross-checks other relevant data sources and notifies possible affected district NADMO officers

**3**

District NADMO checks district hazard profile and determine warning message. Works with CIC for mobile texting, and others (i.e. radio station, etc) to disseminate information

**4**

Appropriate warning message communicated to district residents and responders. Based on capacities, residents themselves can also feed disaster information into the system



# OPERATIONALIZING CICS WITH KEY MESSAGES



Understanding community vulnerability and risk levels thru' education

**Risk = Hazards x Vulnerability x Exposure Capacity**

Knowing the consequences of community actions

Integrating community cultural systems into flood risk messaging led by chiefs and opinion leaders



# KEY LESSONS AND OBSERVATIONS



Evacuation taking place in Weija early 2023

People moving out voluntarily

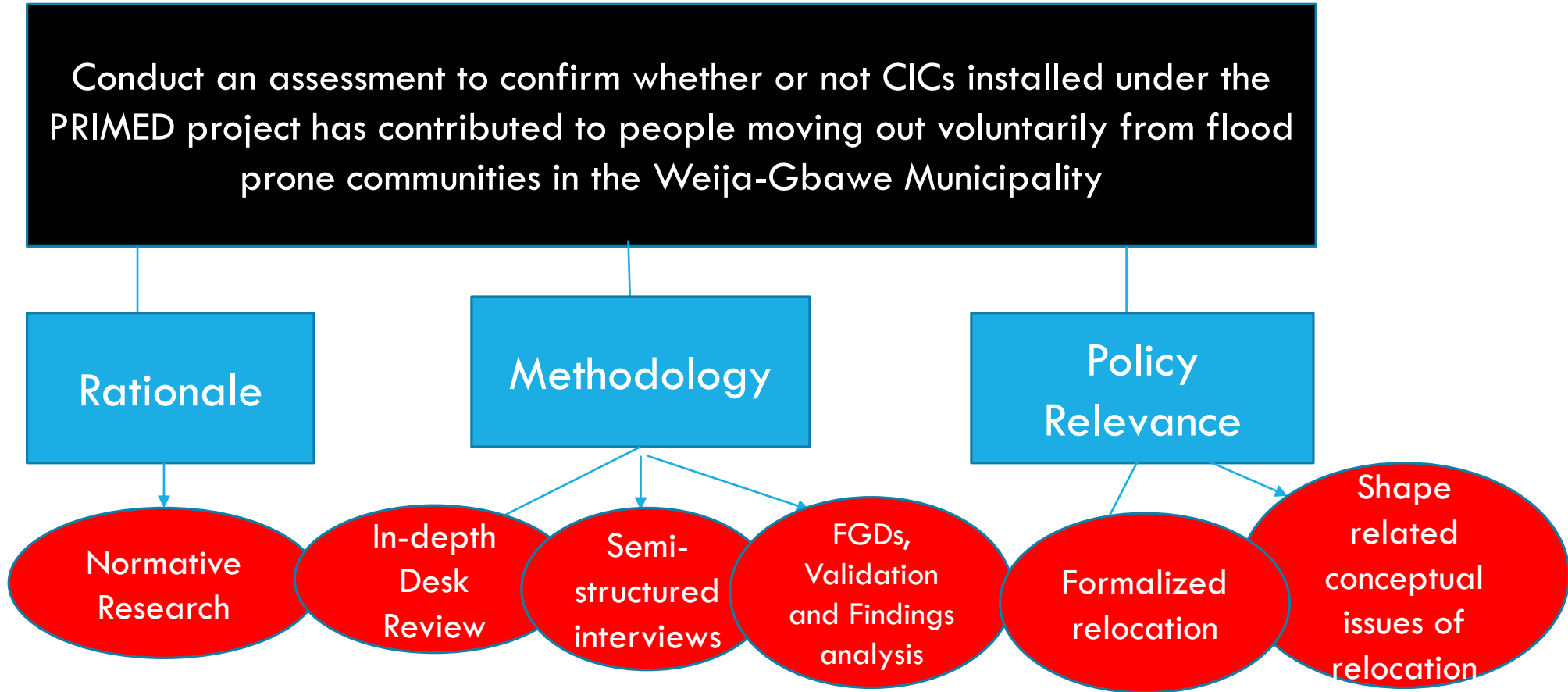
Traditional norms incorporated into communication

Communication platform for participation

Improved early warning communication



# NEXT STEPS



# CONCLUSION



**THANK YOU FOR YOUR ATTENTION**