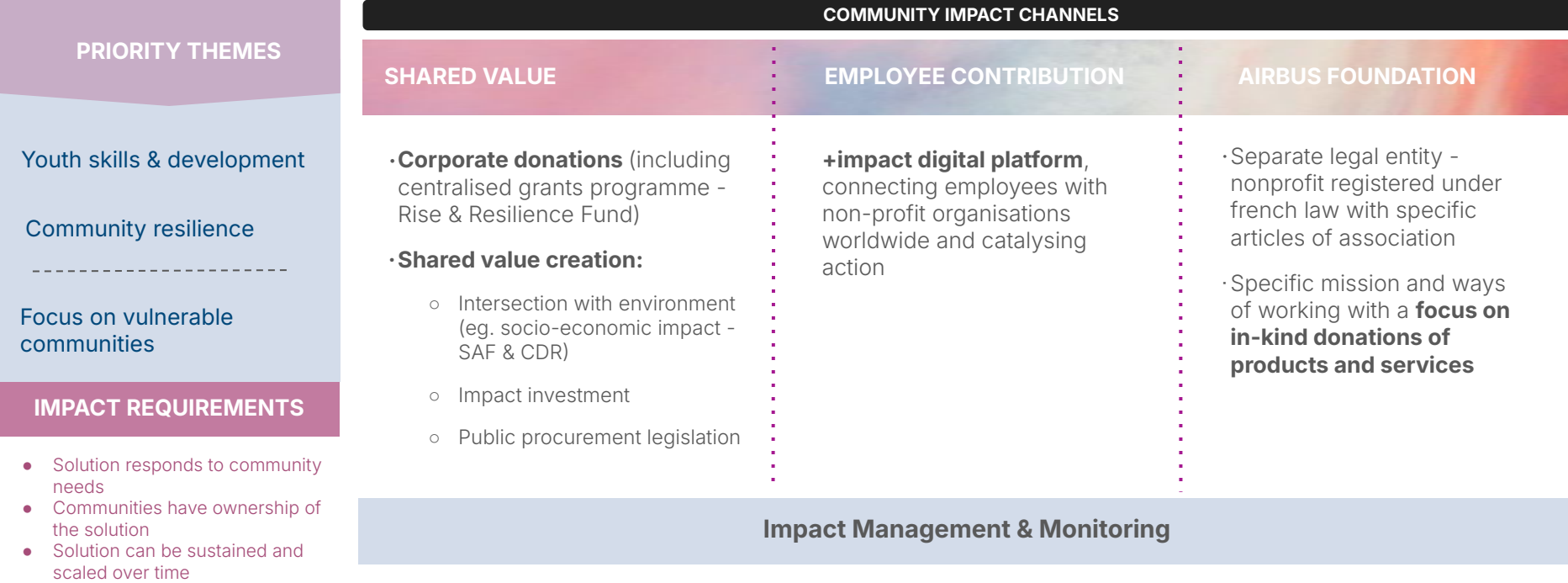




AIRBUS FOUNDATION

Community Impact - framework

Brings together the key channels to ensure a **collective approach** to tackle societal issues across 3 themes:



Humanitarian Response

In total for 2025 : 29 missions

- 2 goodwill flights 10T
- 12 emergency flights 243T
- 9 protracted flights 230T
- 6 helicopter missions 183fh
- 84 150 km2 satellite orders



Search and Rescue

2025 - 6 Airbus Helicopters Operators

Airlink in Indonesia due to flooding

CDCA in Chile due to wildfire

WFP GLC (4) in Burkina Faso due to conflict instability



Goodwill Flights

2025 - 2 ferry/delivery flights

with Aviation without borders

- Air Côte d'Ivoire
- Ethiopian airline



2025 - 21 Relief Flights

- 14 flights with Airlink across 9 nations: Afghanistan, Indonesia, Jamaica, Madagascar, Myanmar, Pakistan, South Sudan, Sri Lanka and Sudan.
- 7 flights with Foundation partners (CDCS/CIC, French Red Cross, Hulo, and IFRC) serving 4 countries: Central African Republic, Jamaica, Reunion, and Uganda.

Assessment

2025 - satellite imagery requests for

84150 km2

from all partners

mainly monitoring, flood & earthquake

Capacity strengthening

Satellite training

Airbus Beyond for Action against hunger, Hulo and IFRC

4 FAM/HEMS with 353 trained people (Chile, India South Africa, Mongolia)

Environmental Conservation



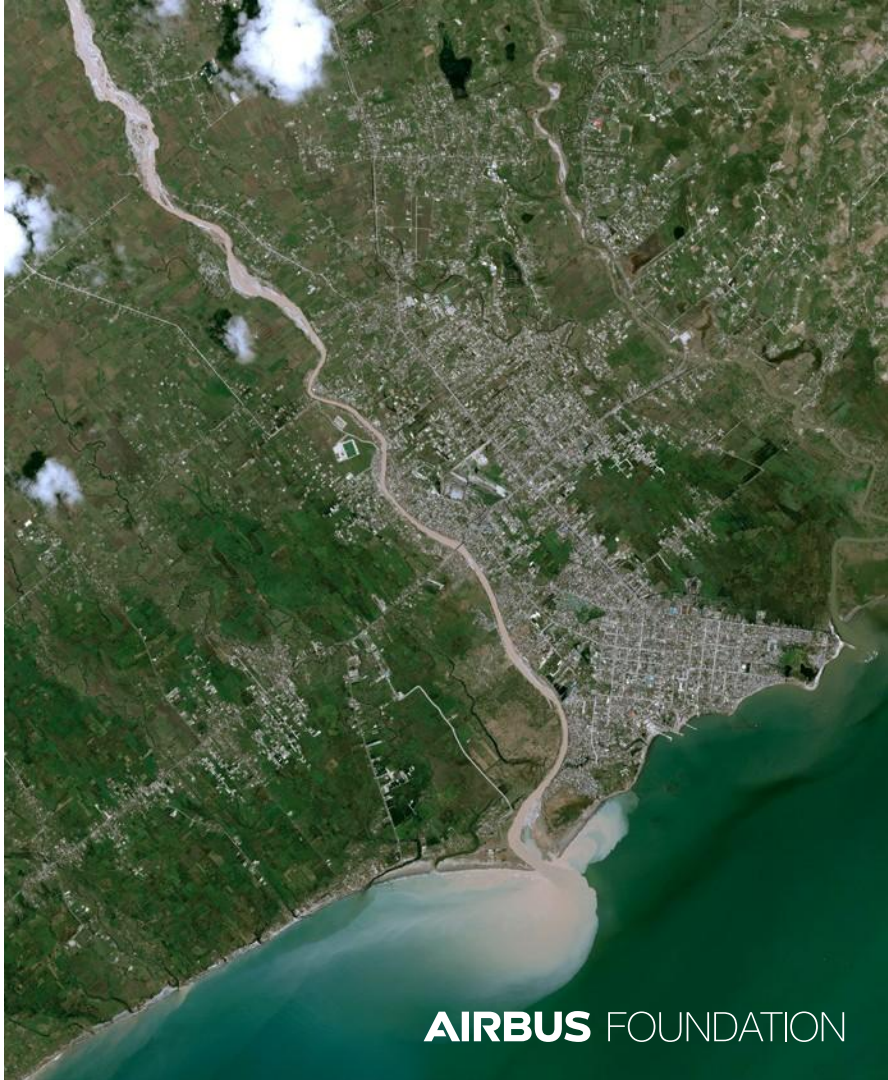
- . Kenya
- . Namibia
- . South Africa
- . South Sudan
- . Ethiopia
- . Congo
- . Democratic Republic of Congo



- . Chad
- . Côte d'Ivoire
- . Madagascar



- . Sierra Leone





Activity Highlights 2024





**“Mars is only an
option if its
chocolate”**



Dipjyoti Deb
Impact Innovation and Impact Investing
Airbus
dipjyoti.deb@airbus.com